

# ABflo® 488 Rabbit anti-Mouse CD72 mAb

Catalog No.: A25518

## Basic Information

### Observed MW

Refer to figures

### Calculated MW

40kDa

### Category

Primary antibody

### Applications

FC

### Cross-Reactivity

Mouse

### CloneNo number

ARC67530-ABflo488

### Conjugate

ABflo® 488. Ex:491nm. Em:516nm.

## Recommended Dilutions

**FC** 5 µl per 10<sup>6</sup> cells in  
100 µl volume

## Background

Predicted to enable carbohydrate binding activity and transmembrane signaling receptor activity. Predicted to be located in membrane. Predicted to be integral component of membrane. Predicted to be integral component of plasma membrane. Is expressed in brain; cerebellum external granule cell layer; cerebellum internal granule cell layer; hippocampus; and neocortex. Orthologous to human CD72 (CD72 molecule).

## Immunogen Information

### Gene ID

12517

### Swiss Prot

P21855

### Immunogen

Recombinant fusion protein containing a sequence corresponding to amino acids 226-354 of mouse CD72 (NP\_031680.2).


### Synonyms

CD72c; Ly-19; Ly-32; Lyb-2; Ly-m19

## Contact

 | 400-999-6126

 | [cn.market@abclonal.com.cn](mailto:cn.market@abclonal.com.cn)

 | [www.abclonal.com.cn](http://www.abclonal.com.cn)

## Product Information

### Source

Rabbit

### Isotype

IgG

### Purification

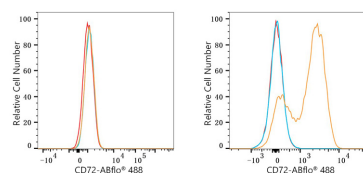
Affinity purification

### Storage

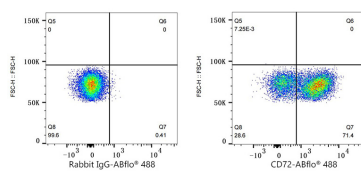
Store at 2-8°C. Avoid freeze.

Buffer: PBS with 0.03% proclin300,0.2% BSA,pH7.3.

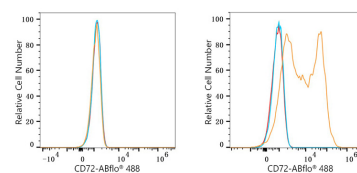
## Validation Data



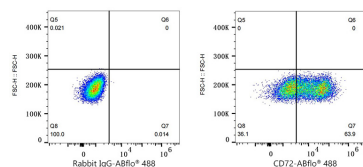
Flow cytometry:  $1 \times 10^6$  NIH/3T3 cells (negative control, left) and C57BL/6 mouse splenocytes cells (right) were surface-stained with ABflo® 488 Rabbit anti-Mouse CD72 mAb (A25518, 5  $\mu$ l/Test, orange line) or ABflo® 488 Rabbit IgG isotype control (A22069, 5  $\mu$ l/Test, blue line). Non-fluorescently stained cells were used as blank control (red line).



Flow cytometry:  $1 \times 10^6$  C57BL/6 mouse splenocytes cells were surface-stained with ABflo® 488 Rabbit IgG isotype control (A22069, 5  $\mu$ l/Test, left) or ABflo® 488 Rabbit anti-Mouse CD72 mAb (A25518, 5  $\mu$ l/Test, right).



Flow cytometry:  $1 \times 10^6$  293T cells (negative control, left) and 293T (Transfection, right) cells were surface-stained with ABflo® 488 Rabbit anti-Mouse CD72 mAb (A25518, 5  $\mu$ l/Test, orange line) or ABflo® 488 Rabbit IgG isotype control (A22069, 5  $\mu$ l/Test, blue line). Non-fluorescently stained cells were used as blank control (red line).



Flow cytometry:  $1 \times 10^6$  293T (Transfection) cells were surface-stained with ABflo® 488 Rabbit IgG isotype control (A22069, 5  $\mu$ l/Test, left) or ABflo® 488 Rabbit anti-Mouse CD72 mAb (A25518, 5  $\mu$ l/Test, right).