

ABflo® 647 Rabbit anti-Mouse CD72 mAb

Catalog No.: A25519

Basic Information

Observed MW

Refer to figures

Calculated MW

40kDa

Category

Primary antibody

Applications

FC

Cross-Reactivity

Mouse

CloneNo number

ARC67530-ABflo647

Conjugate

ABflo® 647. Ex:648nm. Em:664nm.

Recommended Dilutions

FC 5 µl per 10⁶ cells in
100 µl volume

Background

Predicted to enable carbohydrate binding activity and transmembrane signaling receptor activity. Predicted to be located in membrane. Predicted to be integral component of membrane. Predicted to be integral component of plasma membrane. Is expressed in brain; cerebellum external granule cell layer; cerebellum internal granule cell layer; hippocampus; and neocortex. Orthologous to human CD72 (CD72 molecule).

Immunogen Information

Gene ID

12517

Swiss Prot

P21855

Immunogen

Recombinant fusion protein containing a sequence corresponding to amino acids 226-354 of mouse CD72 (NP_031680.2).


Synonyms

CD72c; Ly-19; Ly-32; Lyb-2; Ly-m19

Contact

 | 400-999-6126

 | cn.market@abclonal.com.cn

 | www.abclonal.com.cn

Product Information

Source

Rabbit

Isotype

IgG

Purification

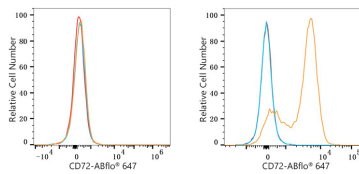
Affinity purification

Storage

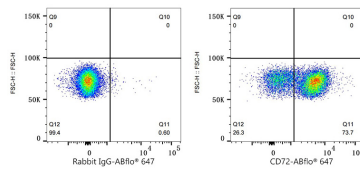
Store at 2-8°C. Avoid freeze.

Buffer: PBS with 0.03% proclin300,0.2% BSA,pH7.3.

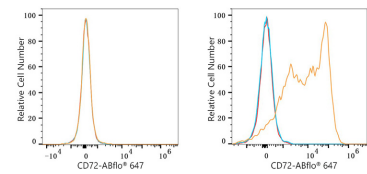
Validation Data



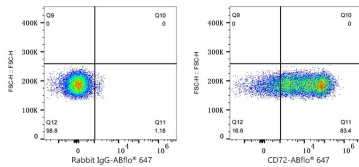
Flow cytometry: 1×10^6 NIH/3T3 cells (negative control, left) and C57BL/6 mouse splenocytes cells (right) were surface-stained with ABflo® 647 Rabbit anti-Mouse CD72 mAb (A25519, 5 μ l/Test, orange line) or ABflo® 647 Rabbit IgG isotype control (A22070, 5 μ l/Test, blue line). Non-fluorescently stained cells were used as blank control (red line).



Flow cytometry: 1×10^6 C57BL/6 mouse splenocytes cells were surface-stained with ABflo® 647 Rabbit IgG isotype control (A22070, 5 μ l/Test, left) or ABflo® 647 Rabbit anti-Mouse CD72 mAb (A25519, 5 μ l/Test, right).



Flow cytometry: 1×10^6 293T cells (negative control, left) and 293T (Transfection, right) cells were surface-stained with ABflo® 647 Rabbit anti-Mouse CD72 mAb (A25519, 5 μ l/Test, orange line) or ABflo® 647 Rabbit IgG isotype control (A22070, 5 μ l/Test, blue line). Non-fluorescently stained cells were used as blank control (red line).



Flow cytometry: 1×10^6 293T (Transfection) cells were surface-stained with ABflo® 647 Rabbit IgG isotype control (A22070, 5 μ l/Test, left) or ABflo® 647 Rabbit anti-Mouse CD72 mAb (A25519, 5 μ l/Test, right).