

ABflo® 594 Rabbit anti-Mouse CD72 mAb

Catalog No.: A25520

Basic Information

Observed MW

Refer to figures

Calculated MW

40kDa

Category

Primary antibody

Applications

FC

Cross-Reactivity

Mouse

CloneNo number

ARC67530

Conjugate

ABflo® 594. Ex:588nm. Em:604nm.

Recommended Dilutions

FC 5 μ l per 10^6 cells in
100 μ l volume

Background

Predicted to enable carbohydrate binding activity and transmembrane signaling receptor activity. Predicted to be located in membrane. Predicted to be integral component of membrane. Predicted to be integral component of plasma membrane. Is expressed in brain; cerebellum external granule cell layer; cerebellum internal granule cell layer; hippocampus; and neocortex. Orthologous to human CD72 (CD72 molecule).

Immunogen Information

Gene ID

12517

Swiss Prot

P21855

Immunogen

Recombinant protein (or fragment). This information is considered to be commercially sensitive.

Synonyms

CD72c; Ly-19; Ly-32; Lyb-2; Ly-m19

Contact

☎ | 400-999-6126

✉ | cn.market@abclonal.com.cn

🌐 | www.abclonal.com.cn

Product Information

Source

Rabbit

Isotype

IgG

Purification

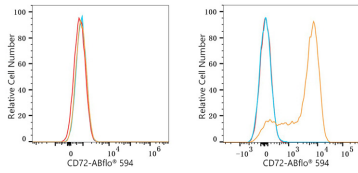
Affinity purification

Storage

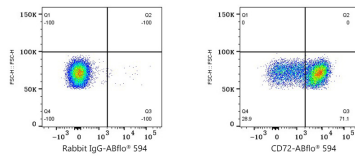
Store at 2-8°C. Avoid freeze.

Buffer: PBS containing 0.2% BSA, preserved with proclin300 or sodium azide (as specified on the Certificate of Analysis), pH 7.3.

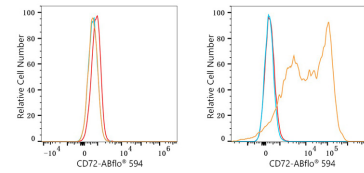
Validation Data



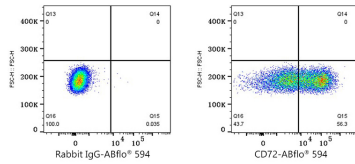
Flow cytometry: 1×10^6 NIH/3T3 cells (negative control, left) and C57BL/6 mouse splenocytes cells (right) were surface-stained with ABflo® 594 Rabbit anti-Mouse CD72 mAb (A25520,5 μ l/Test, orange line) or ABflo® 594 Rabbit IgG isotype control (A23821,5 μ l/Test, blue line). Non-fluorescently stained cells were used as blank control (red line).



Flow cytometry: 1×10^6 C57BL/6 mouse splenocytes cells were surface-stained with ABflo® 594 Rabbit IgG isotype control (A23821,5 μ l/Test, left) or ABflo® 594 Rabbit anti-Mouse CD72 mAb (A25520,5 μ l/Test, right).



Flow cytometry: 1×10^6 293T cells (negative control, left) and 293T (Transfection, right) cells were surface-stained with ABflo® 594 Rabbit anti-Mouse CD72 mAb (A25520,5 μ l/Test, orange line) or ABflo® 594 Rabbit IgG isotype control (A23821,5 μ l/Test, blue line). Non-fluorescently stained cells were used as blank control (red line).



Flow cytometry: 1×10^6 293T (Transfection) cells were surface-stained with ABflo® 594 Rabbit IgG isotype control (A23821,5 μ l/Test, left) or ABflo® 594 Rabbit anti-Mouse CD72 mAb (A25520,5 μ l/Test, right).