

ABflo® 647 Rabbit anti-Human CD307b mAb

Catalog No.: A25524

Basic Information

Observed MW

Calculated MW

56kDa

Category

Primary antibody

Applications

FC

Cross-Reactivity

Human

CloneNo number

ARC65733-ABflo647

Conjugate

ABflo® 647. Ex:648nm. Em:664nm.

Recommended Dilutions

FC 5 µl per 10⁶ cells in
100 µl volume

Background

This gene encodes a member of the immunoglobulin receptor superfamily and is one of several Fc receptor-like glycoproteins clustered on the long arm of chromosome 1. The encoded protein has four extracellular C2-type immunoglobulin domains, a transmembrane domain and a cytoplasmic domain that contains one immunoreceptor-tyrosine activation motif and two immunoreceptor-tyrosine inhibitory motifs. This protein may be a prognostic marker for chronic lymphocytic leukemia. Alternatively spliced transcript variants have been described, but their biological validity has not been determined.

Immunogen Information

Gene ID

79368

Swiss Prot

Q96LA5

Immunogen

Recombinant fusion protein containing a sequence corresponding to amino acids 20-395 of human CD307b (NP_110391.2).

Synonyms

FCRH2; IFGP4; IRTA4; SPAP1; CD307b; SPAP1A; SPAP1B; SPAP1C

Contact

 | 400-999-6126

 | cn.market@abclonal.com.cn

 | www.abclonal.com.cn

Product Information

Source

Rabbit

Isotype

IgG

Purification

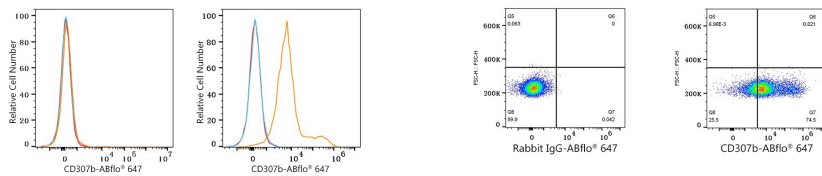
Affinity purification

Storage

Store at 2-8°C. Avoid freeze.

Buffer: PBS with 0.03% proclin300,0.2% BSA,pH7.3.

Validation Data



Flow cytometry: 1X10⁶ 293T cells (negative control, left) and 293T (Transfection, right) cells were surface-stained with ABflo® 647 Rabbit anti-Human CD307b mAb (A25524,5 µl/Test, orange line) or ABflo® 647 Rabbit IgG isotype control (A22070,5 µl/Test, blue line). Non-fluorescently stained cells were used as blank control (red line).

Flow cytometry: 1X10⁶ 293T (Transfection) cells were surface-stained with ABflo® 647 Rabbit IgG isotype control (A22070,5 µl/Test, left) or ABflo® 647 Rabbit anti-Human CD307b mAb (A25524,5 µl/Test, right).