

Mouse IgM Rabbit mAb

Catalog No.: A25537 **Recombinant**

Basic Information

Observed MW

75kDa

Calculated MW

50kDa/53kD

Category

Primary antibody

Applications

WB,IHC-P,FC,ELISA

Cross-Reactivity

Mouse

CloneNo number

ARC58894

Background

Enables several functions, including antigen binding activity; identical protein binding activity; and immunoglobulin receptor binding activity. Acts upstream of or within several processes, including early endosome to late endosome transport; immunoglobulin mediated immune response; and positive regulation of B cell proliferation. Located in external side of plasma membrane; extracellular space; and perinuclear region of cytoplasm. Part of B cell receptor complex and immunoglobulin complex, circulating. Is expressed in several structures, including brain; hemolymphoid system; and liver. Used to study non-Hodgkin lymphoma and type 1 diabetes mellitus. Human ortholog(s) of this gene implicated in agammaglobulinemia. Orthologous to human IGHM (immunoglobulin heavy constant mu).

Recommended Dilutions

WB 1:1000 - 1:5000

IHC-P 1:100 - 1:500

FC 1:500 - 1:1000

ELISA Recommended starting concentration is 1 µg/mL. Please optimize the concentration based on your specific assay requirements.

Immunogen Information

Gene ID

□

Swiss Prot

P01872

Immunogen

Recombinant fusion protein containing a sequence corresponding to amino acids 105-454 of mouse Ighm (P01872).

Synonyms

Igm; muH; Igh6; Igh-6; Igh-M

Contact

☎ | 400-999-6126

✉ | cn.market@abclonal.com.cn

🌐 | www.abclonal.com.cn

Product Information

Source

Rabbit

Isotype

IgG

Purification

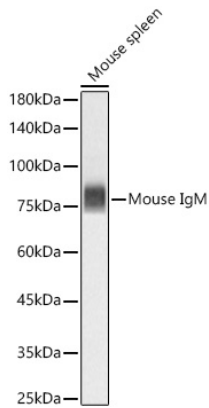
Affinity purification

Storage

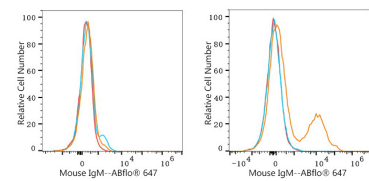
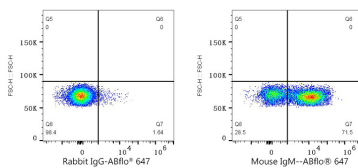
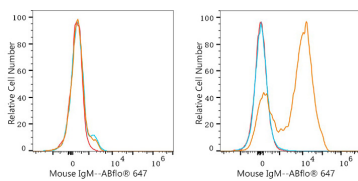
Store at -20°C. Avoid freeze / thaw cycles.

Buffer: PBS with 0.05% proclin300,0.05% BSA,50% glycerol,pH7.3.

Validation Data



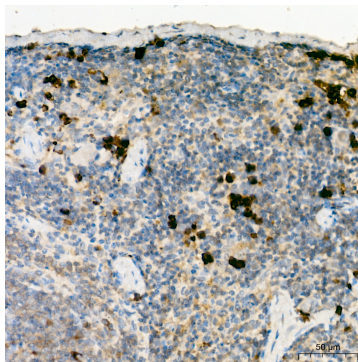
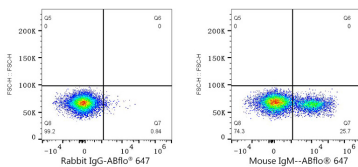
Western blot analysis of lysates from Mouse spleen using Mouse IgM Rabbit mAb (A25537) at 1:3000 dilution incubated overnight at 4°C.
 Secondary antibody: HRP-conjugated Goat anti-Rabbit IgG (H+L) (AS014) at 1:10000 dilution.
 Lysates/proteins: 25 µg per lane.
 Blocking buffer: 3% nonfat dry milk in TBST.
 Detection: ECL Basic Kit (RM00020).
 Exposure time: 10s.



Flow cytometry: 1×10^6 NIH/3T3 cells (negative control, left) and C57BL/6 mouse splenocytes (right) were surface-stained with Mouse IgM Rabbit mAb (A25537, 2 µg/mL, orange line) or Rabbit IgG isotype control (AC042, 2 µg/mL, blue line), followed by Alexa Fluor® 647 conjugated goat anti-rabbit pAb staining. Non-fluorescently stained cells were used as blank control (red line).

Flow cytometry: 1×10^6 C57BL/6 mouse splenocytes were surface-stained with Rabbit IgG isotype control (AC042, 2 µg/mL, left) or Mouse IgM Rabbit mAb (A25537, 2 µg/mL, right), followed by Alexa Fluor® 647 conjugated goat anti-rabbit pAb staining.

Flow cytometry: 1×10^6 NIH/3T3 cells (negative control, left) and Mouse PBMC (right) were surface-stained with Mouse IgM Rabbit mAb (A25537, 2 µg/mL, orange line) or Rabbit IgG isotype control (AC042, 2 µg/mL, blue line), followed by Alexa Fluor® 647 conjugated goat anti-rabbit pAb staining. Non-fluorescently stained cells were used as blank control (red line).



Flow cytometry: 1×10^6 Mouse PBMC were surface-stained with Rabbit IgG isotype control (AC042, 2 µg/mL, left) or Mouse IgM Rabbit mAb (A25537, 2 µg/mL, right), followed by Alexa Fluor® 647 conjugated goat anti-rabbit pAb staining.

Immunohistochemistry analysis of paraffin-embedded Mouse spleen tissue using Mouse IgM Rabbit mAb (A25537) at a dilution of 1:300 (40x lens). High pressure antigen retrieval performed with 0.01M Citrate Buffer (pH 6.0) prior to IHC staining.