

CD16b Rabbit mAb

Catalog No.: A25539 **Recombinant**

Basic Information

Observed MW

40-70kDa

Calculated MW

26kDa

Category

Primary antibody

Applications

ELISA, WB, FC

Cross-Reactivity

Human

CloneNo number

ARC59988

Background

The protein encoded by this gene is a low affinity receptor for the Fc region of gamma immunoglobulins (IgG). The encoded protein acts as a monomer and can bind either monomeric or aggregated IgG. This gene may function to capture immune complexes in the peripheral circulation. Several transcript variants encoding different isoforms have been found for this gene. A highly-similar gene encoding a related protein is also found on chromosome 1.

Recommended Dilutions

WB 1:2000 - 1:4000

FC 1:500 - 1:1000

Immunogen Information

Gene ID

2215

Swiss Prot

O75015

Immunogen

Recombinant fusion protein containing a sequence corresponding to amino acids 20-208 of human CD16b (NP_000561.3).

Synonyms

CD16; FCG3; CD16A; CD16b; FCGR3; CD16-I; FCGR3A; FCR-10; FCRIII; FCRIIIb

Contact

☎ | 400-999-6126

✉ | cn.market@abclonal.com.cn

🌐 | www.abclonal.com.cn

Product Information

Source

Rabbit

Isotype

IgG

Purification

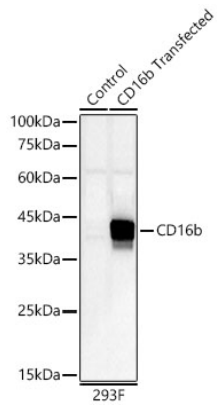
Affinity purification

Storage

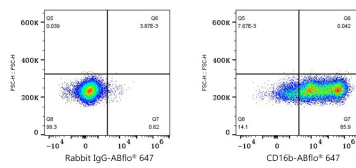
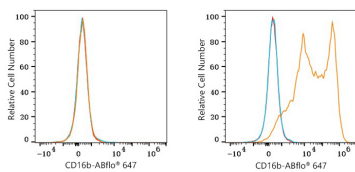
Store at -20°C. Avoid freeze / thaw cycles.

Buffer: PBS with 0.05% proclin300, 0.05% BSA, 50% glycerol, pH7.3.

Validation Data



Western blot analysis of lysates from wild type (WT) and 293F cells transfected with CD16b using CD16b Rabbit mAb (A25539) at 1:4000 dilution.
 Secondary antibody: HRP-conjugated Goat anti-Rabbit IgG (H+L) (AS014) at 1:10000 dilution.
 Lysates/proteins: 25 µg per lane.
 Blocking buffer: 3% nonfat dry milk in TBST.
 Detection: ECL Basic Kit (RM00020).
 Exposure time: 180s.



Flow cytometry: 1×10^6 293T cells (negative control, left) and 293F (Transfection, right) cells (right) were surface-stained with CD16b Rabbit mAb (A25539, 2 µg/mL, orange line) or Rabbit IgG isotype control (AC042, 2 µg/mL, blue line), followed by Alexa Fluor® 647 conjugated goat anti-rabbit pAb staining. Non-fluorescently stained cells were used as blank control (red line).

Flow cytometry: 1×10^6 293F (Transfection) cells were surface-stained with Rabbit IgG isotype control (AC042, 2 µg/mL, left) or CD16b Rabbit mAb (A25539, 2 µg/mL, right), followed by Alexa Fluor® 647 conjugated goat anti-rabbit pAb staining.