

CD116/GM-CSFR α Rabbit mAb

Catalog No.: A25547 **Recombinant**

Basic Information

Observed MW

70-80kDa

Calculated MW

27kDa/33kDa/38kDa/44kDa/46kDa/50kDa

Category

Primary antibody

Applications

WB,FC,ELISA

Cross-Reactivity

Human

CloneNo number

ARC59275

Recommended Dilutions

WB 1:1000 - 1:2000

FC 1:500 - 1:1000

ELISA Recommended starting concentration is 1 μ g/mL. Please optimize the concentration based on your specific assay requirements.

Contact

☎ | 400-999-6126

✉ | cn.market@abclonal.com.cn

🌐 | www.abclonal.com.cn

Background

The protein encoded by this gene is the alpha subunit of the heterodimeric receptor for colony stimulating factor 2, a cytokine which controls the production, differentiation, and function of granulocytes and macrophages. The encoded protein is a member of the cytokine family of receptors. This gene is found in the pseudoautosomal region (PAR) of the X and Y chromosomes. Multiple transcript variants encoding different isoforms have been found for this gene, with some of the isoforms being membrane-bound and others being soluble.

Immunogen Information

Gene ID

1438

Swiss Prot

P15509

Immunogen

Recombinant fusion protein containing a sequence corresponding to amino acids 23-320 of human CD116/GM-CSFR α (NP_006131.2).

Synonyms

GMR; CD116; CSF2R; SMDP4; CDw116; CSF2RX; CSF2RY; GMCSFR; CSF2RAX; CSF2RAY; alphaGMR; GMR-alpha; GMCSFR-alpha; GM-CSF-R-alpha; CD116/GM-CSFR α

Product Information

Source

Rabbit

Isotype

IgG

Purification

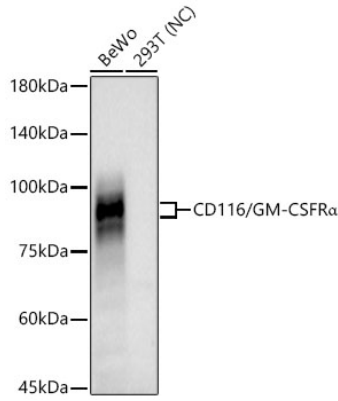
Affinity purification

Storage

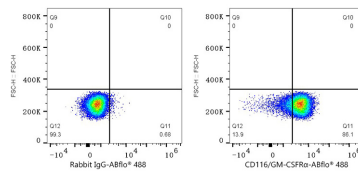
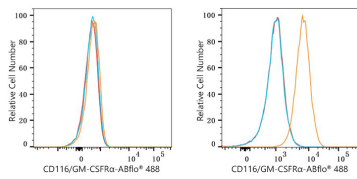
Store at -20°C. Avoid freeze / thaw cycles.

Buffer: PBS with 0.05% proclin300,0.05% BSA,50% glycerol,pH7.3.

Validation Data



Western blot analysis of various lysates using CD116/GM-CSFR α Rabbit mAb (A25547) at 1:1000 dilution. Secondary antibody:HRP Goat Anti-Rabbit IgG (H+L) (AS014) at 1:10000 dilution. Lysates/proteins: 25 μ g per lane. Blocking buffer: 3% nonfat dry milk in TBST. Detection: ECL Basic Kit (RM00020). Negative control (NC): 293T. Exposure time: 90s.



Flow cytometry: 1×10^6 293F cells (negative control, left) and BeWo cells (right) were surface-stained with CD116/GM-CSFR α Rabbit mAb (A25547, 2 μ g/mL, orange line) or Rabbit IgG isotype control (AC042, 2 μ g/mL, blue line), followed by FITC conjugated goat anti-Rabbit pAb staining. Non-fluorescently stained cells were used as blank control (red line).

Flow cytometry: 1×10^6 BeWo cells were surface-stained with Rabbit IgG isotype control (AC042, 2 μ g/mL, left) or CD116/GM-CSFR α Rabbit mAb (A25547, 2 μ g/mL, right), followed by FITC conjugated goat anti-Rabbit pAb staining.