

ABflo® 647 Rabbit anti-Human CD46 mAb

Catalog No.: A25551

Basic Information

Observed MW

Calculated MW

37-44kDa

Category

Primary antibody

Applications

FC

Cross-Reactivity

Human

CloneNo number

ARC65046

Conjugate

ABflo® 647. Ex:648nm. Em:664nm.

Recommended Dilutions

FC 5 µl per 10⁶ cells in
100 µl volume

Background

The protein encoded by this gene is a type I membrane protein and is a regulatory part of the complement system. The encoded protein has cofactor activity for inactivation of complement components C3b and C4b by serum factor I, which protects the host cell from damage by complement. In addition, the encoded protein can act as a receptor for the Edmonston strain of measles virus, human herpesvirus-6, and type IV pili of pathogenic *Neisseria*. Finally, the protein encoded by this gene may be involved in the fusion of the spermatozoa with the oocyte during fertilization. Mutations at this locus have been associated with susceptibility to hemolytic uremic syndrome. Alternatively spliced transcript variants encoding different isoforms have been described.

Immunogen Information

Gene ID

4179

Swiss Prot

P15529

Immunogen

Recombinant protein (or fragment). This information is considered to be commercially sensitive.

Synonyms

MCP; TLX; AHUS2; MIC10; TRA2.10

Contact

☎ | 400-999-6126

✉ | cn.market@abclonal.com.cn

🌐 | www.abclonal.com.cn

Product Information

Source

Rabbit

Isotype

IgG

Purification

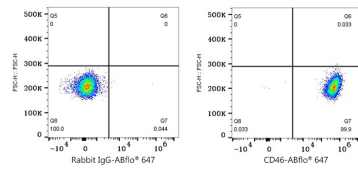
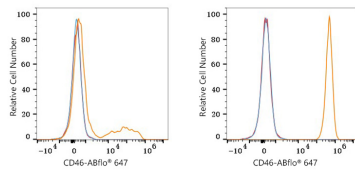
Affinity purification

Storage

Store at 2-8°C. Avoid freeze.

Buffer: PBS containing 0.2% BSA, preserved with proclin300 or sodium azide (as specified on the Certificate of Analysis), pH 7.3.

Validation Data



Flow cytometry: 1×10^6 knockdown (KD) HeLa cells (Low Expression, left) and HeLa cells (right) were surface-stained with ABflo® 647 Rabbit anti-Human CD46 mAb (A25551,5 $\mu\text{l}/\text{Test}$, orange line) or ABflo® 647 Rabbit IgG isotype control (A22070,5 $\mu\text{l}/\text{Test}$, blue line). Non-fluorescently stained cells were used as blank control (red line).

Flow cytometry: 1×10^6 HeLa cells were surface-stained with ABflo® 647 Rabbit IgG isotype control (A22070,5 $\mu\text{l}/\text{Test}$, left) or ABflo® 647 Rabbit anti-Human CD46 mAb (A25551,5 $\mu\text{l}/\text{Test}$, right).