

ABflo® 594 Rabbit anti-Human CD46 mAb

Catalog No.: A25552

Basic Information

Observed MW

Calculated MW

37-44kDa

Category

Primary antibody

Applications

FC

Cross-Reactivity

Human

CloneNo number

ARC65046-ABflo594

Conjugate

ABflo® 594. Ex:588nm. Em:604nm.

Recommended Dilutions

FC 5 µl per 10⁶ cells in
100 µl volume

Background

The protein encoded by this gene is a type I membrane protein and is a regulatory part of the complement system. The encoded protein has cofactor activity for inactivation of complement components C3b and C4b by serum factor I, which protects the host cell from damage by complement. In addition, the encoded protein can act as a receptor for the Edmonston strain of measles virus, human herpesvirus-6, and type IV pili of pathogenic *Neisseria*. Finally, the protein encoded by this gene may be involved in the fusion of the spermatozoa with the oocyte during fertilization. Mutations at this locus have been associated with susceptibility to hemolytic uremic syndrome. Alternatively spliced transcript variants encoding different isoforms have been described.

Immunogen Information

Gene ID

4179

Swiss Prot

P15529

Immunogen

Recombinant fusion protein containing a sequence corresponding to amino acids 35-328 of human CD46 (NP_002380.3).

Synonyms

MCP; TLX; AHUS2; MIC10; TRA2.10

Contact

☎ | 400-999-6126

✉ | cn.market@abclonal.com.cn

🌐 | www.abclonal.com.cn

Product Information

Source

Rabbit

Isotype

IgG

Purification

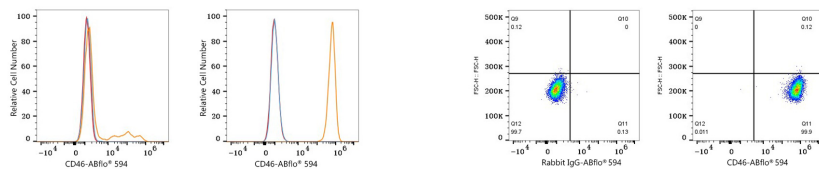
Affinity purification

Storage

Store at 2-8°C. Avoid freeze.

Buffer: PBS with 0.03% proclin300,0.2% BSA,pH7.3.

Validation Data



Flow cytometry: 1×10^6 knockdown (KD) HeLa cells (Low Expression, left) and HeLa cells (right) were surface-stained with ABflo® 594 Rabbit anti-Human CD46 mAb (A25552, 5 μ l/Test, orange line) or ABflo® 594 Rabbit IgG isotype control (A23821, 5 μ l/Test, blue line). Non-fluorescently stained cells were used as blank control (red line).

Flow cytometry: 1×10^6 HeLa cells were surface-stained with ABflo® 594 Rabbit IgG isotype control (A23821, 5 μ l/Test, left) or ABflo® 594 Rabbit anti-Human CD46 mAb (A25552, 5 μ l/Test, right).