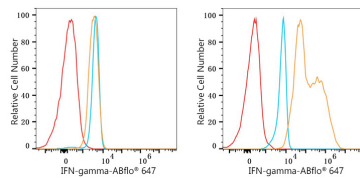
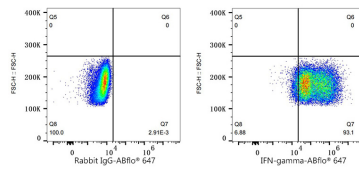


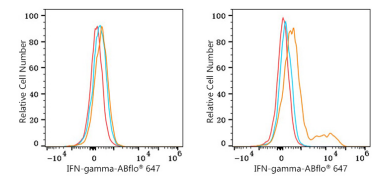
Validation Data



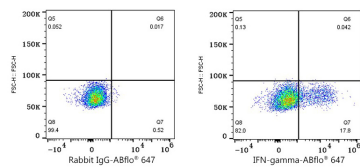
Flow cytometry: 1×10^6 293T (negative control, left) and 293T (Transfection, right) cells were intracellularly-stained with ABflo® 647 Rabbit anti-Human IFN-gamma mAb (A25558, 5 μ l/Test, orange line) or ABflo® 647 Rabbit IgG isotype control (A22070, 5 μ l/Test, blue line). Non-fluorescently stained cells were used as blank control (red line).



Flow cytometry: 1×10^6 293T (Transfection) cells were intracellularly-stained with ABflo® 647 Rabbit IgG isotype control (A22070, 5 μ l/Test, left) or ABflo® 647 Rabbit anti-Human IFN-gamma mAb (A25558, 5 μ l/Test, right).



Flow cytometry: 1×10^6 PBMC (negative control, left) and PBMC (treated with TPA+Ionomycin+Brefeldin A, right) were intracellularly-stained with ABflo® 647 Rabbit anti-Human IFN-gamma mAb (A25558, 5 μ l/Test, orange line) or ABflo® 647 Rabbit IgG isotype control (A22070, 5 μ l/Test, blue line). Non-fluorescently stained cells were used as blank control (red line).



Flow cytometry: 1×10^6 PBMC (treated with TPA+Ionomycin+Brefeldin A) were intracellularly-stained with ABflo® 647 Rabbit IgG isotype control (A22070, 5 μ l/Test, left) or ABflo® 647 Rabbit anti-Human IFN-gamma mAb (A25558, 5 μ l/Test, right).