

ABflo® 594 Rabbit anti-Human IFN-gamma mAb

Catalog No.: A25559

Basic Information

Observed MW

Calculated MW
19kDa

Category
Primary antibody

Applications
FC (intra)

Cross-Reactivity
Human

CloneNo number
ARC67550-ABflo594

Conjugate
ABflo® 594. Ex:588nm. Em:604nm.

Recommended Dilutions

FC (intra) 5 µl per 10⁶ cells in
100 µl volume

Background

This gene encodes a soluble cytokine that is a member of the type II interferon class. The encoded protein is secreted by cells of both the innate and adaptive immune systems. The active protein is a homodimer that binds to the interferon gamma receptor which triggers a cellular response to viral and microbial infections. Mutations in this gene are associated with an increased susceptibility to viral, bacterial and parasitic infections and to several autoimmune diseases.

Immunogen Information

Gene ID	Swiss Prot
3458	P01579

Immunogen

Recombinant fusion protein containing a sequence corresponding to amino acids 24-166 of human IFN-gamma (NP_000610.2).

Synonyms

IFG; IFI; IMD69

Contact

☎ | 400-999-6126

✉ | cn.market@abclonal.com.cn

🌐 | www.abclonal.com.cn

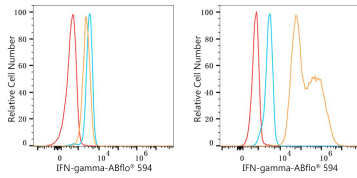
Product Information

Source	Isotype	Purification
Rabbit	IgG	Affinity purification

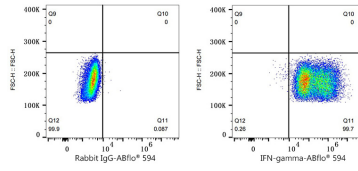
Storage

Store at 2-8°C. Avoid freeze.
Buffer: PBS with 0.03% proclin300,0.2% BSA,pH7.3.

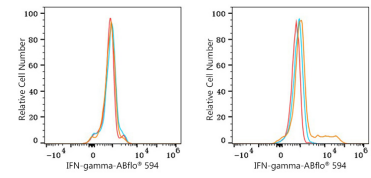
Validation Data



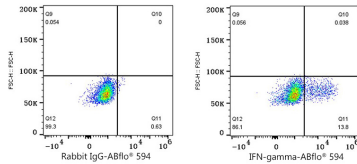
Flow cytometry: 1×10^6 293T (negative control, left) and 293T (Transfection, right) cells were intracellularly-stained with ABflo® 594 Rabbit anti-Human IFN-gamma mAb (A25559, 5 μ l/Test, orange line) or ABflo® 594 Rabbit IgG isotype control (A23821, 5 μ l/Test, blue line). Non-fluorescently stained cells were used as blank control (red line).



Flow cytometry: 1×10^6 293T (Transfection) cells were intracellularly-stained with ABflo® 594 Rabbit IgG isotype control (A23821, 5 μ l/Test, left) or ABflo® 594 Rabbit anti-Human IFN-gamma mAb (A25559, 5 μ l/Test, right).



Flow cytometry: 1×10^6 PBMC (negative control, left) and PBMC (treated with TPA+Ionomycin+Brefeldin A, right) were intracellularly-stained with ABflo® 594 Rabbit anti-Human IFN-gamma mAb (A25559, 5 μ l/Test, orange line) or ABflo® 594 Rabbit IgG isotype control (A23821, 5 μ l/Test, blue line). Non-fluorescently stained cells were used as blank control (red line).



Flow cytometry: 1×10^6 PBMC (treated with TPA+Ionomycin+Brefeldin A) were intracellularly-stained with ABflo® 594 Rabbit IgG isotype control (A23821, 5 μ l/Test, left) or ABflo® 594 Rabbit anti-Human IFN-gamma mAb (A25559, 5 μ l/Test, right).