

ABflo® 647 Rabbit anti-Mouse CD90.2 mAb

Catalog No.: A25561 **1 Publications**

Basic Information

Observed MW

Calculated MW

18kDa

Category

Primary antibody

Applications

FC

Cross-Reactivity

Mouse

CloneNo number

ARC5143-01

Conjugate

ABflo® 647. Ex:648nm. Em:664nm.

Background

This gene encodes a glycoprotein that is anchored to the cell surface of thymocytes, neuronal and other cells through a glycosyl-phosphatidylinositol moiety. A soluble form of the encoded protein has also been detected in serum and cerebrospinal fluid. The encoded protein undergoes further processing to generate the mature protein which mediates cell-cell interactions to trigger downstream signaling pathways.

Recommended Dilutions

FC 5 µl per 10⁶ cells in
100 µl volume

Immunogen Information

Gene ID

21838

Swiss Prot

P01831

Immunogen

Recombinant protein (or fragment). This information is considered to be commercially sensitive.

Synonyms

T25; CD90; Thy-1; Thy1.1; Thy1.2; Thy-1.2

Contact

☎ | 400-999-6126

✉ | cn.market@abclonal.com.cn

🌐 | www.abclonal.com.cn

Product Information

Source

Rabbit

Isotype

IgG

Purification

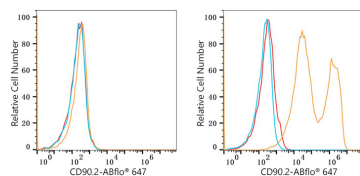
Affinity purification

Storage

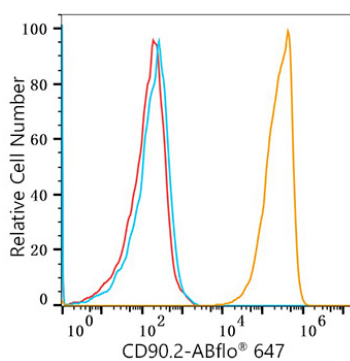
Store at 2-8°C. Avoid freeze.

Buffer: PBS containing 0.2% BSA, preserved with proclin300 or sodium azide (as specified on the Certificate of Analysis), pH 7.3.

Validation Data



Flow cytometry: 1×10^6 293T-CD90.1 (Transfection, left) cells and 293T-CD90.2 (Transfection, right) cells were surface-stained with ABflo® 647 Rabbit anti-Mouse CD90.2 mAb (A25561, 5 μ l/Test, orange line) or ABflo® 647 Rabbit IgG isotype control (A22070, 5 μ l/Test, blue line). Non-fluorescently stained cells were used as blank control (red line).



Flow cytometry: 1×10^6 C57BL/6 mouse thymocytes were surface-stained with ABflo® 647 Rabbit anti-Mouse CD90.2 mAb (A25561, 5 μ l/Test, orange line) or ABflo® 647 Rabbit IgG isotype control (A22070, 5 μ l/Test, blue line). Non-fluorescently stained cells were used as blank control (red line).