

ABflo® 594 Rabbit anti-Mouse CD6 mAb

Catalog No.: A25565

Basic Information

Observed MW

Calculated MW

64kDa/68kDa/72kDa

Category

Primary antibody

Applications

FC

Cross-Reactivity

Mouse

CloneNo number

ARC66616-ABflo594

Conjugate

ABflo® 594. Ex:588nm. Em:604nm.

Recommended Dilutions

FC 5 µl per 10⁶ cells in
100 µl volume

Background

Predicted to enable several functions, including identical protein binding activity; lipopolysaccharide binding activity; and lipoteichoic acid binding activity. Predicted to be involved in several processes, including heterophilic cell-cell adhesion via plasma membrane cell adhesion molecules; lipopolysaccharide-mediated signaling pathway; and positive regulation of macromolecule metabolic process. Predicted to act upstream of or within cell adhesion. Predicted to be located in immunological synapse. Predicted to be spanning component of plasma membrane. Predicted to be part of T cell receptor complex. Predicted to be active in external side of plasma membrane. Orthologous to human CD6 (CD6 molecule).

Immunogen Information

Gene ID

12511

Swiss Prot

Q61003

Immunogen

Recombinant fusion protein containing a sequence corresponding to amino acids 20-155 of mouse CD6(NP_033982.3).

Synonyms

Eukaryota; Metazoa; Chordata; Craniata; Vertebrata; Euteleostomi; Mammalia; Eutheria; Euarchontoglires; Glires; Rodentia; Myomorpha; Muroidea; Muridae; Murinae; Mus; Mus

Contact

☎ | 400-999-6126

✉ | cn.market@abclonal.com.cn

🌐 | www.abclonal.com.cn

Product Information

Source

Rabbit

Isotype

IgG

Purification

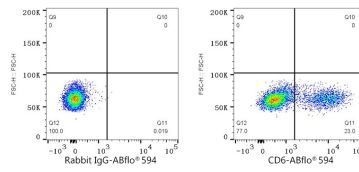
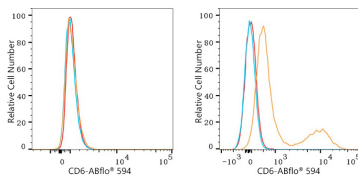
Affinity purification

Storage

Store at 2-8°C. Avoid freeze.

Buffer: PBS with 0.03% proclin300,0.2% BSA,pH7.3.

Validation Data



Flow cytometry: 1×10^6 NIH/3T3 cells (negative control, left) and C57BL/6 mouse Splenocytes (right) were surface-stained with ABflo® 594 Rabbit anti-Mouse CD6 mAb (A25565, 5 μ l/Test, orange line) or ABflo® 594 Rabbit IgG isotype control (A23821, 5 μ l/Test, blue line). Non-fluorescently stained cells were used as blank control (red line).

Flow cytometry: 1×10^6 C57BL/6 mouse Splenocytes were surface-stained with ABflo® 594 Rabbit IgG isotype control (A23821, 5 μ l/Test, left) or ABflo® 594 Rabbit anti-Mouse CD6 mAb (A25565, 5 μ l/Test, right).