

# ABflo® 647 Rabbit anti-Human LILRA2/CD85h mAb

Catalog No.: A25567

## Basic Information

### Observed MW

### Calculated MW

53kDa/51kDa/48kDa/47kDa

### Category

Primary antibody

### Applications

IF/ICC,FC

### Cross-Reactivity

Human

### CloneNo number

ARC65539

### Conjugate

ABflo® 647. Ex:648nm. Em:664nm.

## Background

This gene encodes a member of a family of immunoreceptors that are expressed predominantly on monocytes and B cells, and at lower levels on dendritic cells and natural killer cells. The encoded protein is an activating receptor that inhibits dendritic cell differentiation and antigen presentation and suppresses innate immune response. Alternatively spliced transcript variants encoding different isoforms have been found. This gene is located in a cluster of related genes on chromosome 19 and there is a pseudogene for this gene on chromosome 3.

## Recommended Dilutions

IF/ICC 1:50 - 1:200

FC 5 µl per 10<sup>6</sup> cells in  
100 µl volume

## Immunogen Information

### Gene ID

11027

### Swiss Prot

Q8N149

### Immunogen

Recombinant protein (or fragment). This information is considered to be commercially sensitive.

### Synonyms

ILT1; LIR7; CD85H; LIR-7

## Contact

☎ | 400-999-6126

✉ | [cn.market@abclonal.com.cn](mailto:cn.market@abclonal.com.cn)

🌐 | [www.abclonal.com.cn](http://www.abclonal.com.cn)

## Product Information

### Source

Rabbit

### Isotype

IgG

### Purification

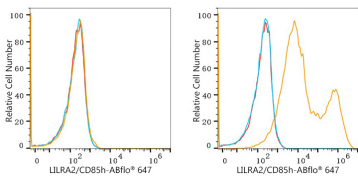
Affinity purification

### Storage

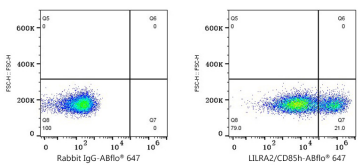
Store at 2-8°C. Avoid freeze.

Buffer: PBS containing 0.2% BSA, preserved with proclin300 or sodium azide (as specified on the Certificate of Analysis), pH 7.3.

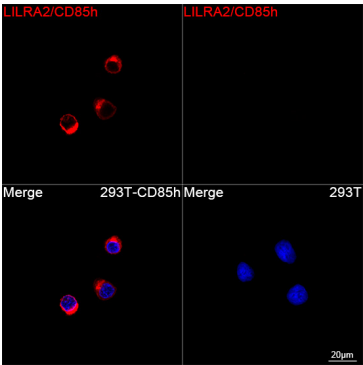
Validation Data



Flow cytometry: 1X10<sup>6</sup> 293T cells (negative control, left) and 293T (Transfection, right) cells were surface-stained with ABflo® 647 Rabbit anti-Human LILRA2/CD85h mAb (A25567, 5 µl/Test, orange line) or ABflo® 647 Rabbit IgG isotype control (A22070, 5 µl/Test, blue line). Non-fluorescently stained cells were used as blank control (red line).



Flow cytometry: 1X10<sup>6</sup> 293T (Transfection) cells were surface-stained with ABflo® 647 Rabbit IgG isotype control (A22070, 5 µl/Test, left) or ABflo® 647 Rabbit anti-Human LILRA2/CD85h mAb (A25567, 5 µl/Test, right).



Confocal imaging of 293T cells transfected with LILRA2/CD85h using ABflo® 647 Rabbit anti-Human LILRA2/CD85h mAb (A25567, dilution 1:100). DAPI was used for nuclear staining (Blue). Objective: 100x.