

LILRA2/CD85h Rabbit mAb

Catalog No.: A25569 **Recombinant**

Basic Information

Observed MW

Refer to figures

Calculated MW

53kDa/51kDa/48kDa/47kDa

Category

Primary antibody

Applications

IF/ICC,FC,ELISA

Cross-Reactivity

Human

CloneNo number

ARC65539

Background

This gene encodes a member of a family of immunoreceptors that are expressed predominantly on monocytes and B cells, and at lower levels on dendritic cells and natural killer cells. The encoded protein is an activating receptor that inhibits dendritic cell differentiation and antigen presentation and suppresses innate immune response. Alternatively spliced transcript variants encoding different isoforms have been found. This gene is located in a cluster of related genes on chromosome 19 and there is a pseudogene for this gene on chromosome 3.

Recommended Dilutions

IF/ICC 1:200 - 1:800

FC 1:500 - 1:1000

ELISA Recommended starting concentration is 1 µg/mL. Please optimize the concentration based on your specific assay requirements.

Immunogen Information

Gene ID

11027

Swiss Prot

Q8N149

Immunogen

Recombinant protein (or fragment). This information is considered to be commercially sensitive.

Synonyms

ILT1; LIR7; CD85H; LIR-7

Contact

☎ | 400-999-6126

✉ | cn.market@abclonal.com.cn

🌐 | www.abclonal.com.cn

Product Information

Source

Rabbit

Isotype

IgG

Purification

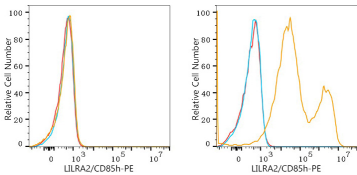
Affinity purification

Storage

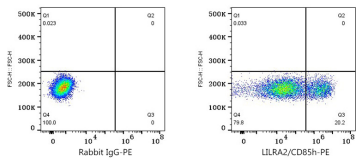
Store at -20°C. Avoid freeze / thaw cycles.

Buffer: PBS containing 50% glycerol and 0.05% BSA, preserved with proclin300 or sodium azide (as specified on the Certificate of Analysis), pH 7.3.

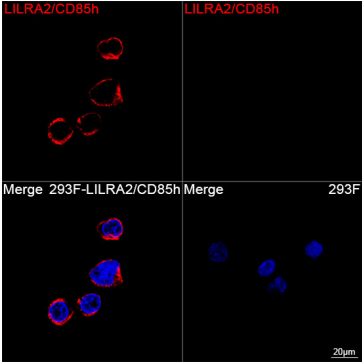
Validation Data



Flow cytometry: 1X10⁶ 293T cells (negative control, left) and 293T (Transfection, right) cells were surface-stained with LILRA2/CD85h Rabbit mAb (A25569, 2 µg/mL, orange line) or PE Rabbit IgG isotype control (A24172, 5 µl/Test, blue line), followed by PE Donkey anti-Rabbit pAb staining. Non-fluorescently stained cells were used as blank control (red line).



Flow cytometry: 1X10⁶ 293T (Transfection) cells were surface-stained with PE Rabbit IgG isotype control (A24172, 5 µl/Test, left) or LILRA2/CD85h Rabbit mAb A25569, 2 µg/mL, right).



Confocal imaging of 293F transfected with LILRA2/CD85h and 293F cells using LILRA2/CD85h Rabbit mAb (A25569, dilution 1:200) followed by a further incubation with Cy3 Goat Anti-Rabbit IgG (H+L) (AS007, dilution 1:500) (Red). DAPI was used for nuclear staining (Blue). Objective: 100x.