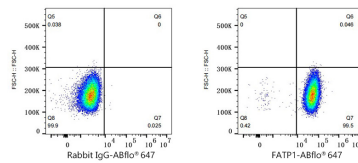
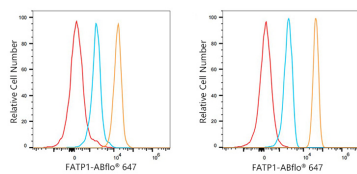


Validation Data



Flow cytometry: 1×10^6 NTERA-2 cells (Low Expression, left) and SK-MEL-28 cells (right) were intracellularly-stained with ABflo® 647 Rabbit anti-Human FATP1 mAb (A25571,5 $\mu\text{l}/\text{Test}$, orange line) or ABflo® 647 Rabbit IgG isotype control (A22070,5 $\mu\text{l}/\text{Test}$, blue line). Non-fluorescently stained cells were used as blank control (red line).

Flow cytometry: 1×10^6 SK-MEL-28 cells were intracellularly-stained with ABflo® 647 Rabbit IgG isotype control (A22070,5 $\mu\text{l}/\text{Test}$, left) or ABflo® 647 Rabbit anti-Human FATP1 mAb (A25571,5 $\mu\text{l}/\text{Test}$, right).