

ABflo® 594 Rabbit anti-Human FATP1 mAb

Catalog No.: A25572

Basic Information

Observed MW

Calculated MW
52kDa/71kDa

Category

Primary antibody

Applications

FC (intra)

Cross-Reactivity

Human

CloneNo number

ARC66918-ABflo594

Conjugate

ABflo® 594. Ex:588nm. Em:604nm.

Recommended Dilutions

FC (intra) 5 µl per 10⁶ cells in
 100 µl volume

Background

Enables biotin transmembrane transporter activity; efflux transmembrane transporter activity; and long-chain fatty acid transporter activity. Involved in several processes, including carboxylic acid transmembrane transport; glycerophospholipid biosynthetic process; and lipid transport across blood-brain barrier. Located in membrane. Part of plasma membrane.

Immunogen Information

Gene ID
376497

Swiss Prot
Q6PCB7

Immunogen

Recombinant fusion protein containing a sequence corresponding to amino acids 510-646 of human FATP1 (NP_940982.1).

Synonyms

FATP; FATP1; ACSVL5; FATP-1

Contact

 | 400-999-6126

 | cn.market@abclonal.com.cn

 | www.abclonal.com.cn

Product Information

Source
Rabbit

Isotype
IgG

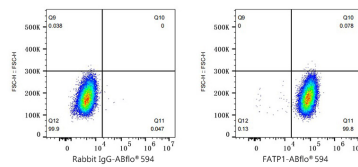
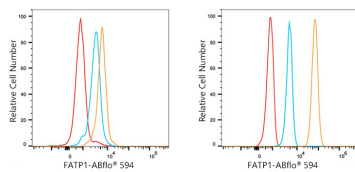
Purification
Affinity purification

Storage

Store at 2-8°C. Avoid freeze.

Buffer: PBS with 0.03% proclin300,0.2% BSA,pH7.3.

Validation Data



Flow cytometry: 1×10^6 NTERA-2 cells (Low Expression, left) and SK-MEL-28 cells (right) were intracellularly-stained with ABflo® 594 Rabbit anti-Human FATP1 mAb (A25572,5 µl/Test, orange line) or ABflo® 594 Rabbit IgG isotype control (A23821,5 µl/Test, blue line). Non-fluorescently stained cells were used as blank control (red line).

Flow cytometry: 1×10^6 SK-MEL-28 cells were intracellularly-stained with ABflo® 594 Rabbit IgG isotype control (A23821,5 µl/Test, left) or ABflo® 594 Rabbit anti-Human FATP1 mAb (A25572,5 µl/Test, right).