

# ABflo® 594 Rabbit anti-Mouse CD215/IL-15R $\alpha$ mAb

Catalog No.: A25575

## Basic Information

### Observed MW

Refer to figures

### Calculated MW

28kDa

### Category

Primary antibody

### Applications

IF/ICC,FC

### Cross-Reactivity

Mouse

### CloneNo number

ARC66399-ABflo594

### Conjugate

ABflo® 594. Ex:588nm. Em:604nm.

## Recommended Dilutions

IF/ICC 1:50 - 1:200

FC 5  $\mu$ l per  $10^6$  cells in  
100  $\mu$ l volume

## Background

Predicted to enable interleukin-15 receptor activity and protein kinase binding activity. Acts upstream of or within positive regulation of natural killer cell differentiation. Located in cytoplasmic vesicle and plasma membrane. Is expressed in central nervous system; retina; retina inner nuclear layer; and retina outer nuclear layer. Orthologous to human IL15RA (interleukin 15 receptor subunit alpha).

## Immunogen Information

### Gene ID

16169

### Swiss Prot

Q60819

### Immunogen

Recombinant fusion protein containing a sequence corresponding to amino acids 33-205 of mouse CD215/IL-15R $\alpha$  ( NP\_032384.1).

### Synonyms

Il15ra

## Contact

 | 400-999-6126

 | [cn.market@abclonal.com.cn](mailto:cn.market@abclonal.com.cn)

 | [www.abclonal.com.cn](http://www.abclonal.com.cn)

## Product Information

### Source

Rabbit

### Isotype

IgG

### Purification

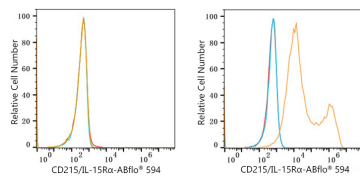
Affinity purification

### Storage

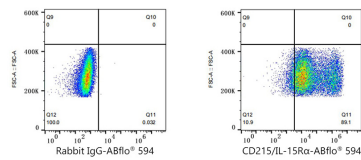
Store at 2-8°C. Avoid freeze.

Buffer: PBS with 0.03% proclin300,0.2% BSA,pH7.3.

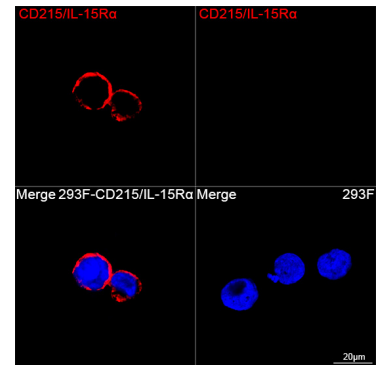
## Validation Data



Flow cytometry:  $1 \times 10^6$  CHO cells (negative control, left) and CHO (Transfection, right) cells were surface-stained with ABflo® 594 Rabbit anti-Mouse CD215/IL-15R $\alpha$  mAb (A25575, 5  $\mu$ l/Test, orange line) or ABflo® 594 Rabbit IgG isotype control (A23821, 5  $\mu$ l/Test, blue line). Non-fluorescently stained cells were used as blank control (red line).



Flow cytometry:  $1 \times 10^6$  CHO (Transfection) cells were surface-stained with ABflo® 594 Rabbit IgG isotype control (A23821, 5  $\mu$ l/Test, left) or ABflo® 594 Rabbit anti-Mouse CD215/IL-15R $\alpha$  mAb (A25575, 5  $\mu$ l/Test, right).



Confocal imaging of 293F cells transfected with CD215/IL-15R $\alpha$  using ABflo® 594 Rabbit anti-Mouse CD215/IL-15R $\alpha$  mAb (A25575, dilution 1:50). DAPI was used for nuclear staining (Blue). Objective: 100x.