

# Insulin Rabbit pAb

**Catalog No.: A25589**

## Basic Information

**Observed MW**

Refer to figures

**Calculated MW**

12kDa

**Category**

Primary antibody

**Applications**

ELISA, IHC-P, IF/ICC

**Cross-Reactivity**

Human

## Background

This gene encodes insulin, a peptide hormone that plays a vital role in the regulation of carbohydrate and lipid metabolism. After removal of the precursor signal peptide, proinsulin is post-translationally cleaved into three peptides: the B chain and A chain peptides, which are covalently linked via two disulfide bonds to form insulin, and C-peptide. Binding of insulin to the insulin receptor (INSR) stimulates glucose uptake. A multitude of mutant alleles with phenotypic effects have been identified, including insulin-dependent diabetes mellitus, permanent neonatal diabetes mellitus, maturity-onset diabetes of the young type 10 and hyperproinsulinemia. There is a read-through gene, INS-IGF2, which overlaps with this gene at the 5' region and with the IGF2 gene at the 3' region.

## Recommended Dilutions

**IHC-P** 1:50 - 1:200**IF/ICC** 1:50 - 1:200

## Immunogen Information

**Gene ID**

3630

**Swiss Prot**

P01308

**Immunogen**

A synthetic peptide corresponding to a sequence within amino acids 1-100 of human Insulin (NP\_000198.1).

**Synonyms**

IDDM; ILPR; IRDN; IDDM1; IDDM2; PNDM4; MODY10

## Contact

 | 400-999-6126 | [cn.market@abclonal.com.cn](mailto:cn.market@abclonal.com.cn) | [www.abclonal.com.cn](http://www.abclonal.com.cn)

## Product Information

**Source**

Rabbit

**Isotype**

IgG

**Purification**

Affinity purification

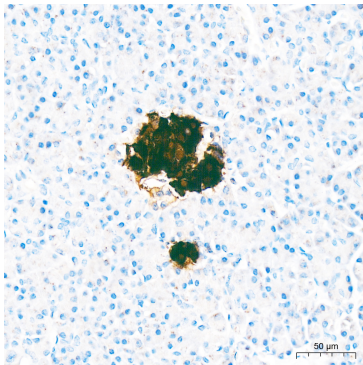
**Storage**

Store at -20°C. Avoid freeze / thaw cycles.

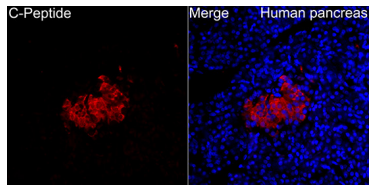
Buffer: PBS with 0.09% Sodium azide, 50% glycerol, pH7.3.

## Validation Data

---



Immunohistochemistry analysis of paraffin-embedded Human pancreas tissue using C-Peptide Rabbit pAb (A25589) at a dilution of 1:2000 (40x lens). High pressure antigen retrieval performed with 0.01M Tris-EDTA Buffer(pH 9.0) prior to IHC staining.



Immunofluorescence analysis of Human pancreas tissue using C-Peptide Rabbit pAb (A25589) at a dilution of 1:100 (40x lens). Secondary antibody: Cy3-conjugated Goat anti-Rabbit IgG (H+L)(A5007) at 1:500 dilution. Blue: DAPI for nuclear staining. High pressure antigen retrieval performed with 0.01M Citrate Buffer(pH 6.0) prior to IF staining.