

PLIN5 Rabbit pAb

Catalog No.: A25598

Basic Information

Observed MW

55kDa

Calculated MW

51kDa

Category

Primary antibody

Applications

ELISA, WB

Cross-Reactivity

Mouse, Rat

Background

Predicted to enable identical protein binding activity and lipase binding activity. Predicted to be involved in several processes, including negative regulation of peroxisome proliferator activated receptor signaling pathway; regulation of lipase activity; and regulation of lipid metabolic process. Located in intracellular membrane-bounded organelle and lipid droplet.

Recommended Dilutions

WB 1:500 - 1:1000

Immunogen Information

Gene ID

440503

Swiss Prot

Q00G26

Immunogen

A synthetic peptide corresponding to a sequence within amino acids 302-401 of human PLIN5 (NP_001013728.2).

Synonyms

MLDP; LSDA5; LSDP5; OXPAT

Contact

 | 400-999-6126

 | cn.market@abclonal.com.cn

 | www.abclonal.com.cn

Product Information

Source

Rabbit

Isotype

IgG

Purification

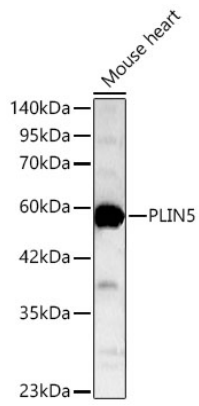
Affinity purification

Storage

Store at -20°C. Avoid freeze / thaw cycles.

Buffer: PBS with 0.05% proclin300, 50% glycerol, pH7.3.

Validation Data



Western blot analysis of lysates from Mouse heart using PLIN5 Rabbit pAb(A25598) at 1:1000 dilution.
Secondary antibody:HRP Goat Anti-Rabbit IgG (H+L)(AS014) at 1:10000 dilution.
Lysates/proteins: 25 µg per lane.
Blocking buffer: 3% nonfat dry milk in TBST.
Detection:ECL Basic Kit (RM00020).
Exposure time:1s.