

CD3E Rabbit pAb

Catalog No.: A25604

Basic Information

Observed MW

Refer to figures

Calculated MW

21kDa

Category

Primary antibody

Applications

ELISA, IHC-P

Cross-Reactivity

Mouse

Background

Predicted to enable several functions, including SH3 domain binding activity; identical protein binding activity; and protein heterodimerization activity. Involved in nervous system development and positive regulation of cell adhesion. Acts upstream of or within several processes, including positive regulation of T cell activation; positive regulation of cytokine production; and regulation of signal transduction. Located in several cellular components, including dendritic spine; external side of plasma membrane; and immunological synapse. Part of alpha-beta T cell receptor complex. Is expressed in colon and hemolymphoid system. Human ortholog(s) of this gene implicated in immunodeficiency 18. Orthologous to human CD3E (CD3e molecule).

Recommended Dilutions

IHC 1:50 - 1:200

Immunogen Information

Gene ID

12501

Swiss Prot

P22646

Immunogen

Recombinant fusion protein containing a sequence corresponding to amino acids 23-108 of mouse CD3E (NP_031674.1).

Synonyms

CD3; T3e; CD3epsilon

Contact

 | 400-999-6126

 | cn.market@abclonal.com.cn

 | www.abclonal.com.cn

Product Information

Source

Rabbit

Isotype

IgG

Purification

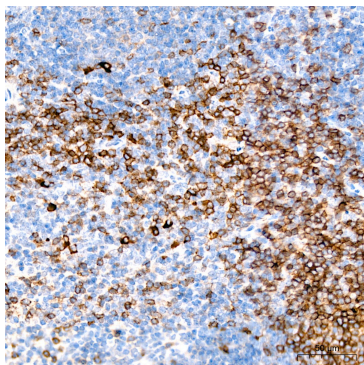
Affinity purification

Storage

Store at -20°C. Avoid freeze / thaw cycles.

Buffer: PBS with 0.05% proclin300, 50% glycerol, pH7.3.

Validation Data



Immunohistochemistry analysis of CD3E in paraffin-embedded Mouse spleen tissue using CD3E Rabbit pAb (A25604) at a dilution of 1:200 (40x lens). High pressure antigen retrieval was performed with 0.01 M citrate buffer (pH 6.0) prior to IHC staining.