

# MITF Rabbit mAb

Catalog No.: A25609 **Recombinant**

## Basic Information

### Observed MW

50-75kDa

### Calculated MW

59kDa

### Category

Primary antibody

### Applications

ELISA, WB, IHC-P

### Cross-Reactivity

Human

### CloneNo number

ARC55803

## Background

The protein encoded by this gene is a transcription factor that contains both basic helix-loop-helix and leucine zipper structural features. The encoded protein regulates melanocyte development and is responsible for pigment cell-specific transcription of the melanogenesis enzyme genes. Heterozygous mutations in the this gene cause auditory-pigmentary syndromes, such as Waardenburg syndrome type 2 and Tietz syndrome.

## Recommended Dilutions

<b>WB</b>	1:10000 - 1:30000
<b>IHC-P</b>	1:2000 - 1:10000

## Immunogen Information

<b>Gene ID</b>	<b>Swiss Prot</b>
4286	O75030

### Immunogen

Recombinant fusion protein containing a sequence corresponding to amino acids 402-526 of human MITF (NP\_001341533.1).

### Synonyms

MI; WS2; CMM8; WS2A; COMMAD; MITF-A; bHLHe32

## Contact

	400-999-6126
	cn.market@abclonal.com.cn
	www.abclonal.com.cn

## Product Information

<b>Source</b>	<b>Isotype</b>	<b>Purification</b>
Rabbit	IgG	Affinity purification

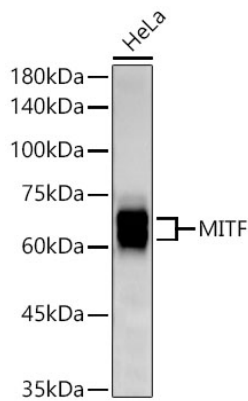
### Storage

Store at -20°C. Avoid freeze / thaw cycles.

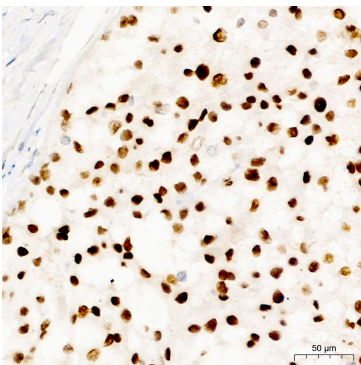
Buffer: PBS with 0.05% proclin300, 0.05% BSA, 50% glycerol, pH7.3.

## Validation Data

---



Western blot analysis of lysates from HeLa cells using MITF Rabbit mAb(A25609) at 1:25000 dilution.  
Secondary antibody:HRP Goat Anti-Rabbit IgG (H+L)(AS014) at 1:10000 dilution.  
Lysates/proteins: 25 µg per lane.  
Blocking buffer: 3% nonfat dry milk in TBST.  
Detection:ECL Basic Kit (RM00020).  
Exposure time:180s.



Immunohistochemistry analysis of MITF in paraffin-embedded Human malignant melanoma tissue using MITF Rabbit mAb (A25609) at a dilution of 1:9000 (40x lens). High pressure antigen retrieval was performed with 0.01 M Tris-EDTA buffer (pH 9.0) prior to IHC staining.