

ABflo® 594 Rabbit anti-Human CD138 mAb

Catalog No.: A25619

Basic Information

Observed MW

Calculated MW

32kDa

Category

Primary antibody

Applications

FC

Cross-Reactivity

Human

CloneNo number

ARC68246-ABflo594

Conjugate

ABflo® 594. Ex:588nm. Em:604nm.

Recommended Dilutions

FC 5 µl per 10⁶ cells in
100 µl volume

Background

The protein encoded by this gene is a transmembrane (type I) heparan sulfate proteoglycan and is a member of the syndecan proteoglycan family. The syndecans mediate cell binding, cell signaling, and cytoskeletal organization and syndecan receptors are required for internalization of the HIV-1 tat protein. The syndecan-1 protein functions as an integral membrane protein and participates in cell proliferation, cell migration and cell-matrix interactions via its receptor for extracellular matrix proteins. Altered syndecan-1 expression has been detected in several different tumor types. While several transcript variants may exist for this gene, the full-length natures of only two have been described to date. These two represent the major variants of this gene and encode the same protein.

Immunogen Information

Gene ID

6382

Swiss Prot

P18827

Immunogen

Recombinant fusion protein containing a sequence corresponding to amino acids 23-251 of human CD138 (NP_002988.4).

Synonyms

SDC; CD138; SYND1; syndecan

Contact

☎ | 400-999-6126

✉ | cn.market@abclonal.com.cn

🌐 | www.abclonal.com.cn

Product Information

Source

Rabbit

Isotype

IgG

Purification

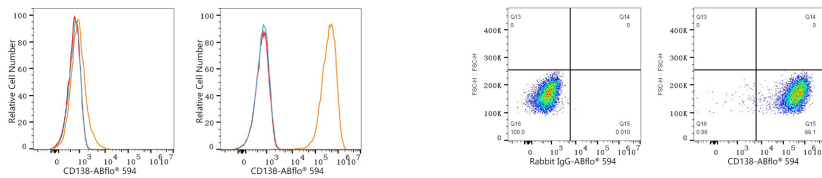
Affinity purification

Storage

Store at 2-8°C. Avoid freeze.

Buffer: PBS with 0.03% proclin300,0.2% BSA,pH7.3.

Validation Data



Flow cytometry: 1×10^6 HEL cells (negative control, left) and U266 cells (right) were surface-stained with ABflo® 594 Rabbit anti-Human CD138 mAb (A25619, 5 $\mu\text{l}/\text{Test}$, orange line) or ABflo® 594 Rabbit IgG isotype control (A23821, 5 $\mu\text{l}/\text{Test}$, blue line). Non-fluorescently stained cells were used as blank control (red line).

Flow cytometry: 1×10^6 U266 cells were surface-stained with ABflo® 594 Rabbit IgG isotype control (A23821, 5 $\mu\text{l}/\text{Test}$, left) or ABflo® 594 Rabbit anti-Human CD138 mAb (A25619, 5 $\mu\text{l}/\text{Test}$, right).