

# PE Rabbit anti-Human NG2 mAb

Catalog No.: A25623

## Basic Information

### Observed MW

### Calculated MW

251kDa

### Category

Primary antibody

### Applications

FC

### Cross-Reactivity

Human

### CloneNo number

ARC64580-PE

### Conjugate

PE. Ex:565nm. Em:574nm.

## Background

A human melanoma-associated chondroitin sulfate proteoglycan plays a role in stabilizing cell-substratum interactions during early events of melanoma cell spreading on endothelial basement membranes. CSPG4 represents an integral membrane chondroitin sulfate proteoglycan expressed by human malignant melanoma cells.

## Recommended Dilutions

FC 5  $\mu$ l per  $10^6$  cells in  
100  $\mu$ l volume

## Immunogen Information

### Gene ID

1464

### Swiss Prot

Q6UVK1

### Immunogen

Recombinant fusion protein containing a sequence corresponding to amino acids 1583-2224 of human NG2 (NP\_001888.2).

### Synonyms

NG2; MCSP; MCSPG; MSK16; CSPG4A; HMW-MAA; MEL-CSPG

## Contact

☎ | 400-999-6126

✉ | [cn.market@abclonal.com.cn](mailto:cn.market@abclonal.com.cn)

🌐 | [www.abclonal.com.cn](http://www.abclonal.com.cn)

## Product Information

### Source

Rabbit

### Isotype

IgG

### Purification

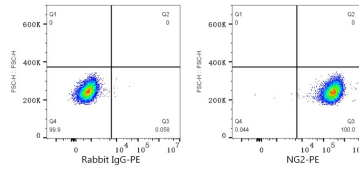
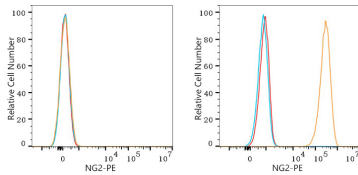
Affinity purification

### Storage

Store at 2-8°C. Avoid freeze.

Buffer: PBS with 0.03% proclin300,0.2% BSA,pH7.3.

## Validation Data



Flow cytometry:  $1 \times 10^6$  Jurkat cells (negative control, left) and SK-MEL-28 cells (right) were surface-stained with PE Rabbit anti-Human NG2 mAb (A25623, 5 µl/Test, orange line) or PE Rabbit IgG isotype control (A24172, 5 µl/Test, blue line). Non-fluorescently stained cells were used as blank control (red line).

Flow cytometry:  $1 \times 10^6$  SK-MEL-28 cells were surface-stained with PE Rabbit IgG isotype control (A24172, 5 µl/Test, left) or PE Rabbit anti-Human NG2 mAb (A25623, 5 µl/Test, right).