

APC Rabbit anti-Human CD228/MFI2 mAb

Catalog No.: A25625

Basic Information

Observed MW

Calculated MW

32kDa/80kDa

Category

Primary antibody

Applications

FC

Cross-Reactivity

Human

CloneNo number

ARC66603

Conjugate

APC. Ex:650nm. Em:660nm.

Background

The protein encoded by this gene is a cell-surface glycoprotein found on melanoma cells. The protein shares sequence similarity and iron-binding properties with members of the transferrin superfamily. The importance of the iron binding function has not yet been identified. This gene resides in the same region of chromosome 3 as members of the transferrin superfamily. Alternative splicing results in two transcript variants.

Recommended Dilutions

FC 5 μ l per 10^6 cells in
100 μ l volume

Immunogen Information

Gene ID

4241

Swiss Prot

P08582

Immunogen

Recombinant protein (or fragment). This information is considered to be commercially sensitive.

Synonyms

MTf; MFI2; MTF1; CD228; MAP97

Contact

☎ | 400-999-6126

✉ | cn.market@abclonal.com.cn

🌐 | www.abclonal.com.cn

Product Information

Source

Rabbit

Isotype

IgG

Purification

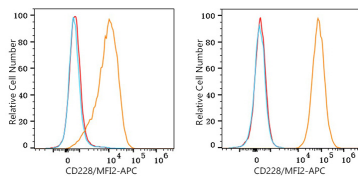
Affinity purification

Storage

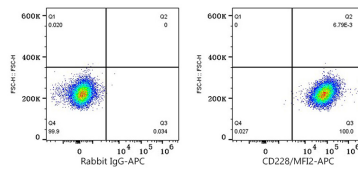
Store at 2-8°C. Avoid freeze.

Buffer: PBS containing 0.2% BSA, preserved with proclin300 or sodium azide (as specified on the Certificate of Analysis), pH 7.3.

Validation Data



Flow cytometry: 1×10^6 HUVEC cells (Low Expression, left) and A-375 cells (right) were surface-stained with APC Rabbit anti-Human CD228/MFI2 mAb (A25625, 5 μ l/Test, orange line) or APC Rabbit IgG isotype control (A24173, 5 μ l/Test, left). Non-fluorescently stained cells were used as blank control (red line).



Flow cytometry: 1×10^6 A-375 cells were surface-stained with APC Rabbit IgG isotype control (A24173, 5 μ l/Test, left) or APC Rabbit anti-Human CD228/MFI2 mAb (A25625, 5 μ l/Test, right).