

[KD Validated] Argonaute-2 Rabbit mAb

Catalog No.: A25642 **Recombinant**

Basic Information

Observed MW

96kDa

Calculated MW

97kDa

Category

Primary antibody

Applications

WB, IHC-P, IF/ICC, ELISA

Cross-Reactivity

Human, Mouse, Rat

CloneNo number

ARC66928

Background

This gene encodes a member of the Argonaute family of proteins which play a role in RNA interference. The encoded protein is highly basic, and contains a PAZ domain and a PIWI domain. It may interact with dicer1 and play a role in short-interfering-RNA-mediated gene silencing. Multiple transcript variants encoding different isoforms have been found for this gene.

Recommended Dilutions

WB 1:2000 - 1:8000**IHC-P** 1:600 - 1:6000**IF/ICC** 1:300 - 1:1200**ELISA** Recommended starting concentration is 1 µg/mL. Please optimize the concentration based on your specific assay requirements.

Immunogen Information

Gene ID

27161

Swiss Prot

Q9UKV8

Immunogen

A synthetic peptide corresponding to a sequence within amino acids 101-200 of human Argonaute-2 (NP_036286.2).

Synonyms

PPD; Q10; CASC7; EIF2C2; LESKRES; LINC00980

Contact

 | 400-999-6126 | cn.market@abclonal.com.cn | www.abclonal.com.cn

Product Information

Source

Rabbit

Isotype

IgG

Purification

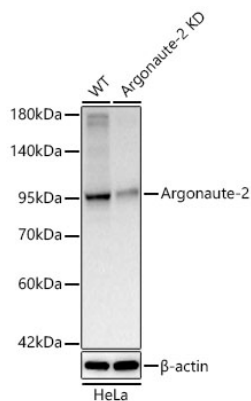
Affinity purification

Storage

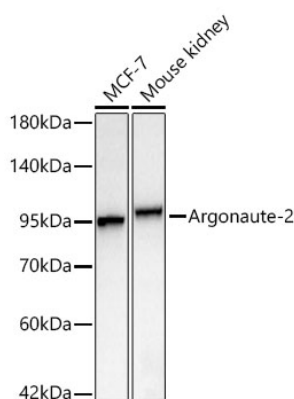
Store at -20°C. Avoid freeze / thaw cycles.

Buffer: PBS with 0.05% proclin300, 0.05% BSA, 50% glycerol, pH7.3.

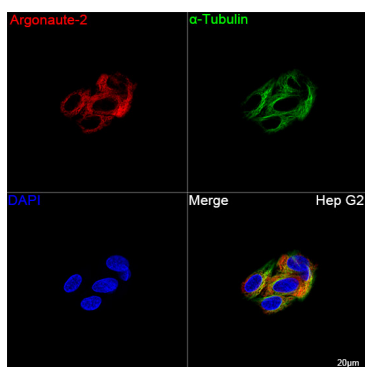
Validation Data



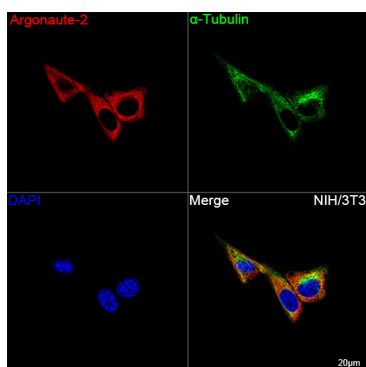
Western blot analysis of lysates from wild type (WT) and Argonaute-2 knockdown (KD) HeLa cells using [KD Validated] Argonaute-2 Rabbit mAb (A25642) at 1:2900 dilution. Secondary antibody: HRP-conjugated Goat anti-Rabbit IgG (H+L) (AS014) at 1:10000 dilution. Lysates/proteins: 25 µg per lane. Blocking buffer: 3% nonfat dry milk in TBST. Detection: ECL Basic Kit (RM00020). Exposure time: 30s.



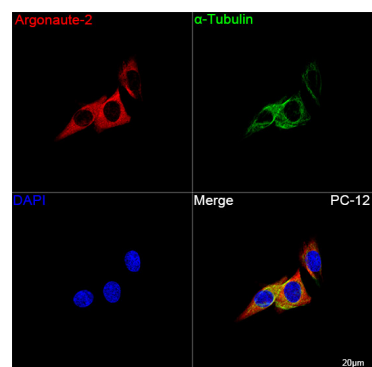
Western blot analysis of various lysates using [KD Validated] Argonaute-2 Rabbit mAb (A25642) at 1:2900 dilution. Secondary antibody: HRP-conjugated Goat anti-Rabbit IgG (H+L) (AS014) at 1:10000 dilution. Lysates / proteins: 25 µg per lane. Blocking buffer: 3 % nonfat dry milk in TBST. Detection: ECL Basic Kit (RM00020). Exposure time: 30s.



Confocal imaging of Hep G2 cells using [KD Validated] Argonaute-2 Rabbit mAb (A25642, dilution 1:300) followed by a further incubation with Cy3 Goat Anti-Rabbit IgG (H+L) (AS007, dilution 1:500) (Red). The cells were counterstained with α -Tubulin Mouse mAb (AC012, dilution 1:400) followed by incubation with ABflo® 488-conjugated Goat Anti-Mouse IgG (H+L) Ab (AS076, dilution 1:500) (Green). DAPI was used for nuclear staining (Blue). Objective: 100x.

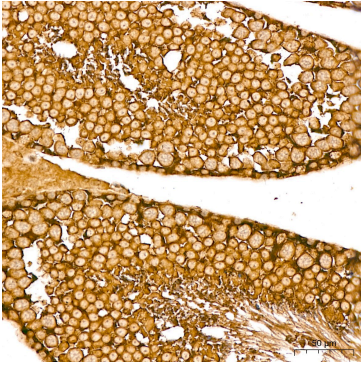


Confocal imaging of NIH/3T3 cells using [KD Validated] Argonaute-2 Rabbit mAb (A25642, dilution 1:300) followed by a further incubation with Cy3 Goat Anti-Rabbit IgG (H+L) (AS007, dilution 1:500) (Red). The cells were counterstained with α -Tubulin Mouse mAb (AC012, dilution 1:400) followed by incubation with ABflo® 488-conjugated Goat Anti-Mouse IgG (H+L) Ab (AS076, dilution 1:500) (Green). DAPI was used for nuclear staining (Blue). Objective: 100x.

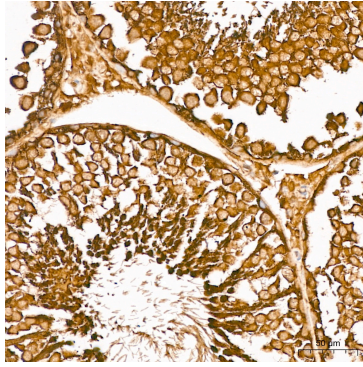


Confocal imaging of PC-12 cells using [KD Validated] Argonaute-2 Rabbit mAb (A25642, dilution 1:300) followed by a further incubation with Cy3 Goat Anti-Rabbit IgG (H+L) (AS007, dilution 1:500) (Red). The cells were counterstained with α -Tubulin Mouse mAb (AC012, dilution 1:400) followed by incubation with ABflo® 488-conjugated Goat Anti-Mouse IgG (H+L) Ab (AS076, dilution 1:500) (Green). DAPI was used for nuclear staining (Blue). Objective: 100x.

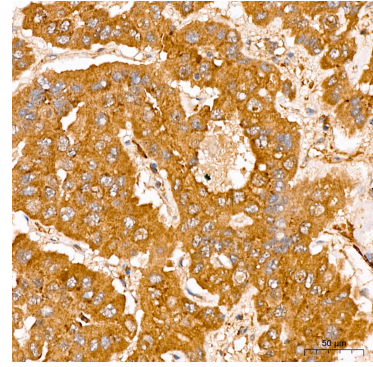
Validation Data



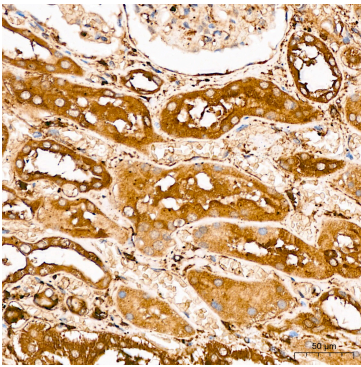
Immunohistochemistry analysis of paraffin-embedded Mouse testis tissue using [KD Validated] Argonaute-2 Rabbit mAb (A25642) at a dilution of 1:600 (40x lens). High pressure antigen retrieval was performed with 0.01 M citrate buffer (pH 6.0) prior to IHC staining.



Immunohistochemistry analysis of paraffin-embedded Rat testis tissue using [KD Validated] Argonaute-2 Rabbit mAb (A25642) at a dilution of 1:600 (40x lens). High pressure antigen retrieval was performed with 0.01 M citrate buffer (pH 6.0) prior to IHC staining.



Immunohistochemistry analysis of paraffin-embedded Human liver cancer tissue using [KD Validated] Argonaute-2 Rabbit mAb (A25642) at a dilution of 1:600 (40x lens). High pressure antigen retrieval was performed with 0.01 M citrate buffer (pH 6.0) prior to IHC staining.



Immunohistochemistry analysis of paraffin-embedded Human kidney tissue using [KD Validated] Argonaute-2 Rabbit mAb (A25642) at a dilution of 1:600 (40x lens). High pressure antigen retrieval was performed with 0.01 M citrate buffer (pH 6.0) prior to IHC staining.