

Rabbit Anti-Goat IgG (Fab) fragment mAb

Catalog No.: A25643

Basic Information

Observed MW

25kDa

Calculated MW

Category

Primary antibody

Applications

WB,FC,ELISA

Cross-Reactivity

Goat

CloneNo number

ARC57078

Background

Recommended Dilutions

WB 1:1000 - 1:5000

FC 1:500 - 1:1000

ELISA Recommended starting concentration is 1 µg/mL. Please optimize the concentration based on your specific assay requirements.

Immunogen Information

Gene ID

Swiss Prot

Immunogen

Recombinant protein (or fragment). This information is considered to be commercially sensitive.

Synonyms

Contact

☎ | 400-999-6126

✉ | cn.market@abclonal.com.cn

🌐 | www.abclonal.com.cn

Product Information

Source

Rabbit

Isotype

IgG

Purification

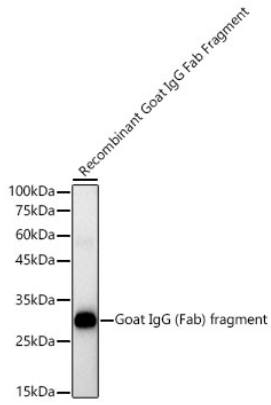
Affinity purification

Storage

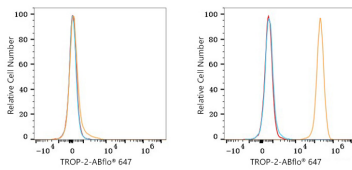
Store at -20°C. Avoid freeze / thaw cycles.

Buffer: PBS containing 50% glycerol and 0.05% BSA, preserved with proclin300 or sodium azide (as specified on the Certificate of Analysis), pH 7.3.

Validation Data



Western blot analysis of recombinant Goat IgG Fab fragment using Rabbit Anti-Goat IgG (Fab) fragment mAb (A25643) at 1:1900 dilution.
Lysates/proteins: 100ng per lane.
Blocking buffer: 3% nonfat dry milk in TBST.
Detection: ECL Basic Kit (RM00020).
Exposure time: 180s.



Flow cytometry: 1×10^6 Jurkat cells (negative control, left) and A-431 cells (right) were surface-stained with Human TROP-2 Antibody (2 μ g/mL, orange line) or Rabbit Anti-Goat IgG (Fab) fragment mAb (A25643, 5 μ l/Test, blue line), followed by Alexa Fluor® 647 conjugated goat anti-rabbit pAb staining. Non-fluorescently stained cells were used as blank control (red line). Rabbit Anti-Goat IgG (Fab) fragment mAb (A25643, 5 μ l/Test) was used as a secondary antibody.