

FSH alpha/beta Rabbit mAb

Catalog No.: A25649 **Recombinant**

Basic Information

Observed MW

Calculated MW

13kDa/15kDa

Category

Primary antibody

Applications

IF-P,IHC-P,ELISA

Cross-Reactivity

Human

CloneNo number

ARC65860

Background

The four human glycoprotein hormones chorionic gonadotropin (CG), luteinizing hormone (LH), follicle stimulating hormone (FSH), and thyroid stimulating hormone (TSH) are dimers consisting of alpha and beta subunits that are associated noncovalently. The alpha subunits of these hormones are identical, however, their beta chains are unique and confer biological specificity. The protein encoded by this gene is the alpha subunit and belongs to the glycoprotein hormones alpha chain family. Two transcript variants encoding different isoforms have been found for this gene.

Recommended Dilutions

IF-P 1:500 - 1:2000

IHC-P 1:700 - 1:7000

ELISA Recommended starting concentration is 1 µg/mL. Please optimize the concentration based on your specific assay requirements.

Immunogen Information

Gene ID

1081/2488

Swiss Prot

P01215/P01225

Immunogen

Recombinant fusion protein containing a sequence corresponding to amino acids 25-116 of human FSH alpha/beta(NP_000726.1/NP_000501.1).

Synonyms

HCG; LHA; FSHA; GPA1; GPHa; TSHA; GPHA1; CG-ALPHA;FSHB

Contact

☎ | 400-999-6126

✉ | cn.market@abclonal.com.cn

🌐 | www.abclonal.com.cn

Product Information

Source

Rabbit

Isotype

IgG

Purification

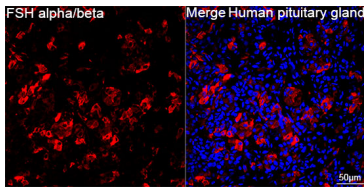
Affinity purification

Storage

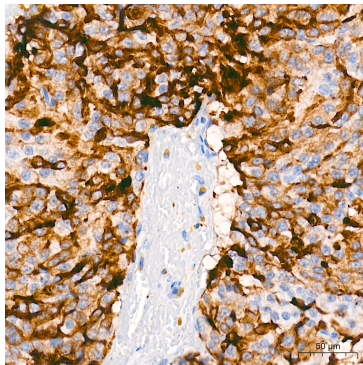
Store at -20°C. Avoid freeze / thaw cycles.

Buffer: PBS with 0.09% Sodium azide,0.05% BSA,50% glycerol,pH7.3.

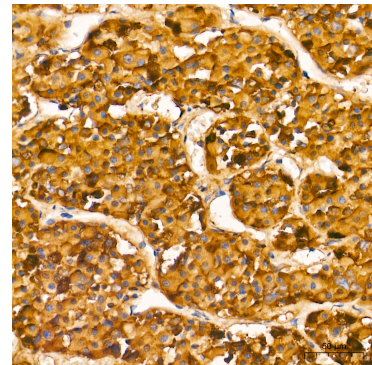
Validation Data



Confocal imaging of paraffin-embedded Human pituitary gland tissue using FSH alpha/beta Rabbit mAb (A25649, dilution 1:500) followed by a further incubation with Cy3 Goat Anti-Rabbit IgG (H+L) (AS007, dilution 1:500) (Red). DAPI was used for nuclear staining (Blue). Objective: 40x. Perform high pressure antigen retrieval with 0.01 M citrate buffer (pH 6.0) prior to IF staining.



Immunohistochemistry analysis of paraffin-embedded Human pituitary adenoma tissue using FSH alpha/beta Rabbit mAb (A25649) at a dilution of 1:700 (40x lens). High pressure antigen retrieval performed with 0.01M Tris-EDTA Buffer (pH 9.0) prior to IHC staining.



Immunohistochemistry analysis of paraffin-embedded Human pituitary tissue using FSH alpha/beta Rabbit mAb (A25649) at a dilution of 1:700 (40x lens). High pressure antigen retrieval performed with 0.01M Tris-EDTA Buffer (pH 9.0) prior to IHC staining.