

# SKP1 Rabbit pAb

Catalog No.: A2566

## Basic Information

### Observed MW

19kDa

### Calculated MW

19kDa

### Category

Primary antibody

### Applications

WB,ELISA

### Cross-Reactivity

Human, Mouse

## Background

This gene encodes a component of SCF complexes, which are composed of this protein, cullin 1, a ring-box protein, and one member of the F-box family of proteins. This protein binds directly to the F-box motif found in F-box proteins. SCF complexes are involved in the regulated ubiquitination of specific protein substrates, which targets them for degradation by the proteasome. Specific F-box proteins recognize different target protein(s), and many specific SCF substrates have been identified including regulators of cell cycle progression and development. Studies have also characterized the protein as an RNA polymerase II elongation factor. Alternative splicing of this gene results in two transcript variants. A related pseudogene has been identified on chromosome 7.

## Recommended Dilutions

**WB** 1:500 - 1:2000

**ELISA** Recommended starting concentration is 1 µg/mL. Please optimize the concentration based on your specific assay requirements.

## Immunogen Information

### Gene ID

6500

### Swiss Prot

P63208

### Immunogen

Recombinant fusion protein containing a sequence corresponding to amino acids 1-163 of human SKP1 (NP\_733779.1).

### Synonyms

OCP2; p19A; EMC19; SKP1A; OCP-II; TCEB1L; SKP1

## Contact

☎ | 400-999-6126

✉ | [cn.market@abclonal.com.cn](mailto:cn.market@abclonal.com.cn)

🌐 | [www.abclonal.com.cn](http://www.abclonal.com.cn)

## Product Information

### Source

Rabbit

### Isotype

IgG

### Purification

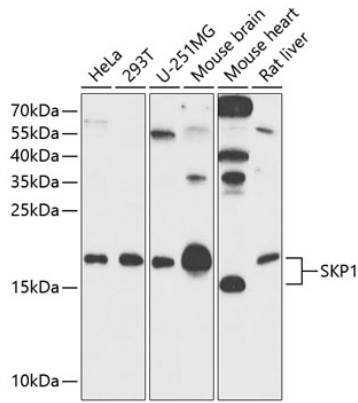
Affinity purification

### Storage

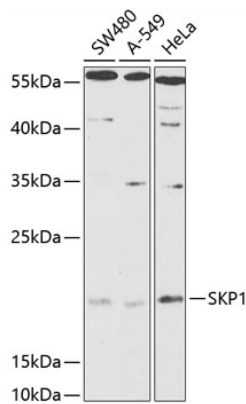
Store at -20°C. Avoid freeze / thaw cycles.

Buffer: PBS with 0.02% sodium azide,50% glycerol,pH7.3.

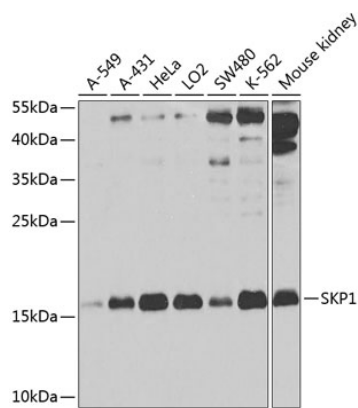
## Validation Data



Western blot analysis of various lysates using SKP1 Rabbit pAb (A2566) at 1:500 dilution. Secondary antibody: HRP-conjugated Goat anti-Rabbit IgG (H+L) (AS014) at 1:10000 dilution. Lysates/proteins: 25µg per lane. Blocking buffer: 3% nonfat dry milk in TBST. Detection: ECL Basic Kit (RM00020). Exposure time: 90s.



Western blot analysis of various lysates using SKP1 Rabbit pAb (A2566) at 1:1000 dilution. Secondary antibody: HRP-conjugated Goat anti-Rabbit IgG (H+L) (AS014) at 1:10000 dilution. Lysates/proteins: 25µg per lane. Blocking buffer: 3% nonfat dry milk in TBST.



Western blot analysis of various lysates using SKP1 Rabbit pAb (A2566) at 1:1000 dilution. Secondary antibody: HRP-conjugated Goat anti-Rabbit IgG (H+L) (AS014) at 1:10000 dilution. Lysates/proteins: 25µg per lane. Blocking buffer: 3% nonfat dry milk in TBST. Detection: ECL Basic Kit (RM00020). Exposure time: 30s.