

[KO Validated] Ythdc1 Rabbit mAb

Catalog No.: A25682 **KO** **Validated** **Recombinant**

Basic Information

Observed MW

100kDa

Calculated MW

85kDa

Category

Primary antibody

Applications

WB, ELISA

Cross-Reactivity

Human

CloneNo number

ARC66394

Background

Predicted to enable N6-methyladenosine-containing RNA binding activity and mRNA binding activity. Involved in posttranscriptional regulation of gene expression. Acts upstream of or within gamete generation; in utero embryonic development; and regulation of mRNA processing. Located in nucleus. Orthologous to human YTHDC1 (YTH domain containing 1).

Recommended Dilutions

WB 1:1000 - 1:4000

ELISA Recommended starting concentration is 1 µg/mL. Please optimize the concentration based on your specific assay requirements.

Immunogen Information

Gene ID

231386

Swiss Prot

E9Q5K9

Immunogen

Recombinant protein (or fragment). This information is considered to be commercially sensitive.

Synonyms

mKIAA1966; A730098D12Rik; Mouse Ythdc1

Contact

☎ | 400-999-6126

✉ | cn.market@abclonal.com.cn

🌐 | www.abclonal.com.cn

Product Information

Source

Rabbit

Isotype

IgG

Purification

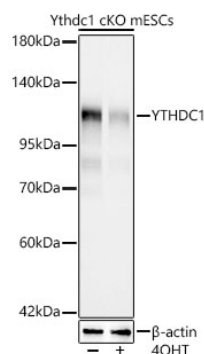
Affinity purification

Storage

Store at -20°C. Avoid freeze / thaw cycles.

Buffer: PBS with 0.09% Sodium azide, 0.05% BSA, 50% glycerol, pH7.3.

Validation Data



Western blot analysis of lysates from Ythdc1-cKO mouse ES cells, using [KO Validated] Ythdc1 Rabbit mAb (A25682) at 1:1000 dilution incubated overnight at 4°C. Ythdc1-cKO mouse ES cells were treated by 4OHT.

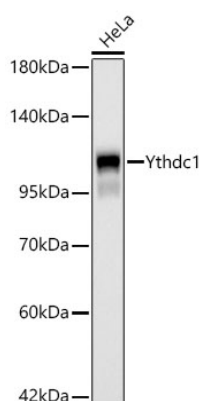
Secondary antibody: HRP-conjugated Goat anti-Rabbit IgG (H+L) (AS014) at 1:10000 dilution.

Lysates/proteins: 25 µg per lane.

Blocking buffer: 3% nonfat dry milk in TBST.

Detection: ECL Basic Kit (RM00020).

Exposure time: 45s.



Western blot analysis of lysates from HeLa cells using [KO Validated] Ythdc1 Rabbit mAb (A25682) at 1:1000 dilution incubated overnight at 4°C.

Secondary antibody: HRP-conjugated Goat anti-Rabbit IgG (H+L) (AS014) at 1:10000 dilution.

Lysates/proteins: 25 µg per lane.

Blocking buffer: 3% nonfat dry milk in TBST.

Detection: ECL Basic Kit (RM00020).

Exposure time: 45s.