

# [KD Validated] KDM2B Rabbit pAb

Catalog No.: A25693

## Basic Information

### Observed MW

180kDa

### Calculated MW

153kDa

### Category

Primary antibody

### Applications

ELISA, WB

### Cross-Reactivity

Human

## Background

This gene encodes a member of the F-box protein family which is characterized by an approximately 40 amino acid motif, the F-box. The F-box proteins constitute one of the four subunits of ubiquitin protein ligase complex called SCFs (SKP1-cullin-F-box), which function in phosphorylation-dependent ubiquitination. The F-box proteins are divided into 3 classes: Fbws containing WD-40 domains, Fbls containing leucine-rich repeats, and Fbxs containing either different protein-protein interaction modules or no recognizable motifs. The protein encoded by this gene belongs to the Fbls class. Multiple alternatively spliced transcript variants have been found for this gene, but the full-length nature of some variants has not been determined.

## Recommended Dilutions

WB 1:500 - 1:1000

## Immunogen Information

### Gene ID

84678

### Swiss Prot

Q8NHM5

### Immunogen

Recombinant fusion protein containing a sequence corresponding to amino acids 1059-1336 of human KDM2B (NP\_115979.3).

### Synonyms

CXXC2; Fbl10; PCCX2; FBXL10; JHDM1B

## Contact

☎ | 400-999-6126

✉ | [cn.market@abclonal.com.cn](mailto:cn.market@abclonal.com.cn)

🌐 | [www.abclonal.com.cn](http://www.abclonal.com.cn)

## Product Information

### Source

Rabbit

### Isotype

IgG

### Purification

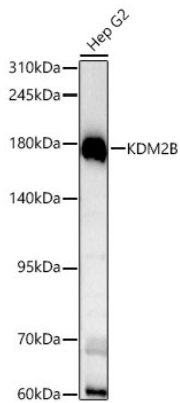
Affinity purification

### Storage

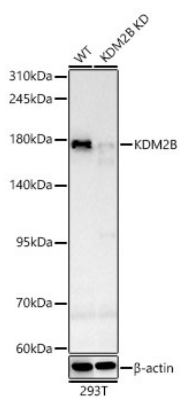
Store at -20°C. Avoid freeze / thaw cycles.

Buffer: PBS with 0.05% proclin300, 50% glycerol, pH7.3.

## Validation Data



Western blot analysis of lysates from Hep G2 cells using [KD Validated] KDM2B Rabbit pAb (A25693) at 1:1000 dilution incubated overnight at 4°C.  
Secondary antibody: HRP Goat Anti-Rabbit IgG (H+L)(AS014) at 1:10000 dilution.  
Lysates/proteins: 25 µg per lane.  
Blocking buffer: 3% nonfat dry milk in TBST.  
Detection: ECL Basic Kit (RM00020)  
Exposure time: 90 s.



Western blot analysis of lysates from 293T cells using [KD Validated] KDM2B Rabbit pAb (A25693) at 1:1000 dilution incubated overnight at 4°C.  
Secondary antibody: HRP Goat Anti-Rabbit IgG (H+L)(AS014) at 1:10000 dilution.  
Lysates/proteins: 25 µg per lane.  
Blocking buffer: 3% nonfat dry milk in TBST.  
Detection: ECL Basic Kit (RM00020)  
Exposure time: 90 s.