

PE Rabbit anti-Mouse/Rat CD27 mAb

Catalog No.: A25696

Basic Information

Observed MW

Calculated MW

28kDa

Category

Primary antibody

Applications

FC

Cross-Reactivity

Mouse, Rat

CloneNo number

ARC67086-PE

Conjugate

PE. Ex:565nm. Em:574nm.

Recommended Dilutions

FC 5 μ l per 10^6 cells in
100 μ l volume

Background

Predicted to enable cysteine-type endopeptidase inhibitor activity involved in apoptotic process. Involved in negative regulation of apoptotic process and positive regulation of JNK cascade. Acts upstream of or within negative regulation of T cell apoptotic process. Located in external side of plasma membrane. Is expressed in several structures, including femur; hemolymphoid system; intestine; pituitary gland; and reproductive system. Human ortholog(s) of this gene implicated in lymphoproliferative syndrome 2. Orthologous to human CD27 (CD27 molecule).

Immunogen Information

Gene ID

21940

Swiss Prot

P41272

Immunogen

Recombinant fusion protein containing a sequence corresponding to amino acids 24-182 of mouse CD27 (NP_001028298.1).

Synonyms

S152; Tp55; Tnfrsf7

Contact

 | 400-999-6126

 | cn.market@abclonal.com.cn

 | www.abclonal.com.cn

Product Information

Source

Rabbit

Isotype

IgG

Purification

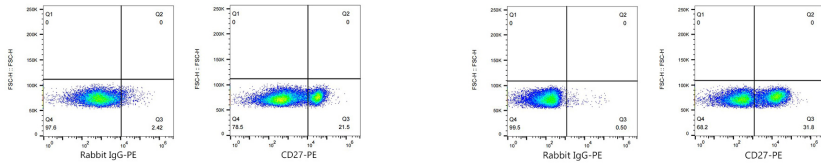
Affinity purification

Storage

Store at 2-8°C. Avoid freeze.

Buffer: PBS with 0.03% proclin300,0.2% BSA,pH7.3.

Validation Data



Flow cytometry: 1×10^6 C57BL/6 mouse Splenocytes were surface-stained with PE Rabbit IgG isotype control (A24172, 5 μ l/Test, left) or PE Rabbit anti-Mouse/Rat CD27 mAb (A25696, 5 μ l/Test, right).

Flow cytometry: 1×10^6 Rat splenocytes were surface-stained with PE Rabbit IgG isotype control (A24172, 5 μ l/Test, left) or PE Rabbit anti-Mouse/Rat CD27 mAb (A25696, 5 μ l/Test, right).