

PE Rabbit anti-Human CR2/CD21 mAb

Catalog No.: A25702

Basic Information

Observed MW

Refer to figures

Calculated MW

110kDa/113kDa/118kDa/119kDa

Category

Primary antibody

Applications

FC

Cross-Reactivity

Human

CloneNo number

ARC56643-PE

Conjugate

PE. Ex:565nm. Em:574nm.

Recommended Dilutions

FC 5 μ l per 10^6 cells in
100 μ l volume

Background

This gene encodes a membrane protein, which functions as a receptor for Epstein-Barr virus (EBV) binding on B and T lymphocytes. Genetic variations in this gene are associated with susceptibility to systemic lupus erythematosus type 9 (SLEB9). Alternatively spliced transcript variants encoding different isoforms have been found for this gene.

Immunogen Information

Gene ID

1380

Swiss Prot

P20023

Immunogen

Recombinant fusion protein containing a sequence corresponding to amino acids 21-971 of human CD21 (NP_001868.2).

Synonyms

CR; C3DR; CD21; CVID7; SLEB9

Contact

 | 400-999-6126

 | cn.market@abclonal.com.cn

 | www.abclonal.com.cn

Product Information

Source

Rabbit

Isotype

IgG

Purification

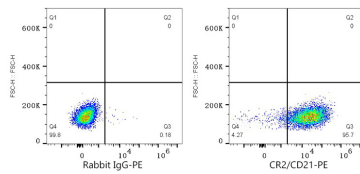
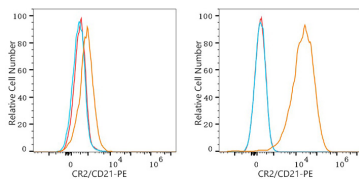
Affinity purification

Storage

Store at 2-8°C. Avoid freeze.

Buffer: PBS with 0.03% proclin300,0.2% BSA,pH7.3.

Validation Data



Flow cytometry: 1X10⁶ HAP1 cells (negative control, left) and Daudi cells (right) were surface-stained with PE Rabbit anti-Human CR2/CD21 mAb (A25702, 5 µl/Test, orange line) or PE Rabbit IgG isotype control (A24172, 5 µl/Test, blue line). Non-fluorescently stained cells were used as blank control (red line).

Flow cytometry: 1X10⁶ Daudi cells were surface-stained with PE Rabbit IgG isotype control (A24172, 5 µl/Test, left) or PE Rabbit anti-Human CR2/CD21 mAb (A25702, 5 µl/Test, right).