

ABflo® 488 Rabbit anti-Mouse CD10 mAb

Catalog No.: A25704

Basic Information

Observed MW

Refer to figures

Calculated MW

86kDa

Category

Primary antibody

Applications

FC

Cross-Reactivity

Mouse

CloneNo number

ARC67050-ABflo488

Conjugate

ABflo® 488. Ex:491nm. Em:516nm.


Recommended Dilutions

FC 5 µl per 10⁶ cells in
100 µl volume

Contact

 | 400-999-6126

 | cn.market@abclonal.com.cn

 | www.abclonal.com.cn

Background

Enables peptidase activity. Involved in amyloid-beta clearance; positive regulation of long-term synaptic potentiation; and sensory perception of pain. Acts upstream of or within amyloid-beta metabolic process. Located in several cellular components, including dendrite; neuron projection terminus; and synaptic vesicle. Is expressed in several structures, including alimentary system; central nervous system; genitourinary system; liver and biliary system; and mammary gland. Used to study Alzheimer's disease. Human ortholog(s) of this gene implicated in Alzheimer's disease; Charcot-Marie-Tooth disease axonal type 2T; cerebellar ataxia type 43; cerebral amyloid angiopathy; and membranous glomerulonephritis. Orthologous to human MME (membrane metalloendopeptidase).

Immunogen Information

Gene ID

17380

Swiss Prot

Q61391

Immunogen

Recombinant fusion protein containing a sequence corresponding to amino acids 52-750 of mouse CD10 (NP_032630.2).

Synonyms

Mme

Product Information

Source

Rabbit

Isotype

IgG

Purification

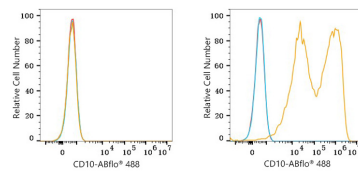
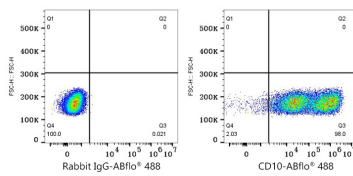
Affinity purification

Storage

Store at 2-8°C. Avoid freeze.

Buffer: PBS with 0.03% proclin300,0.2% BSA,pH7.3.

Validation Data



Flow cytometry: 1×10^6 293T (Transfection) cells were surface-stained with ABflo® 488 Rabbit IgG isotype control (A22069,5 μ l/Test,left) or ABflo® 488 Rabbit anti-Mouse CD10 mAb (A25704,5 μ l/Test,right).

Flow cytometry: 1×10^6 293T cells (negative control,left) and 293T (Transfection,right) cells were surface-stained with ABflo® 488 Rabbit anti-Mouse CD10 mAb (A25704,5 μ l/Test,orange line) or ABflo® 488 Rabbit IgG isotype control (A22069,5 μ l/Test,blue line). Non-fluorescently stained cells were used as blank control (red line).