

# ABflo® 647 Rabbit anti-Mouse CD10 mAb

Catalog No.: A25705

## Basic Information

### Observed MW

Refer to figures

### Calculated MW

86kDa

### Category

Primary antibody

### Applications

FC

### Cross-Reactivity

Mouse

### CloneNo number

ARC67050-ABflo647

### Conjugate

ABflo® 647. Ex:648nm. Em:664nm.

## Recommended Dilutions

FC 5 µl per 10<sup>6</sup> cells in  
100 µl volume

## Background

Enables peptidase activity. Involved in amyloid-beta clearance; positive regulation of long-term synaptic potentiation; and sensory perception of pain. Acts upstream of or within amyloid-beta metabolic process. Located in several cellular components, including dendrite; neuron projection terminus; and synaptic vesicle. Is expressed in several structures, including alimentary system; central nervous system; genitourinary system; liver and biliary system; and mammary gland. Used to study Alzheimer's disease. Human ortholog(s) of this gene implicated in Alzheimer's disease; Charcot-Marie-Tooth disease axonal type 2T; cerebellar ataxia type 43; cerebral amyloid angiopathy; and membranous glomerulonephritis. Orthologous to human MME (membrane metalloendopeptidase).

## Immunogen Information

### Gene ID

17380

### Swiss Prot

Q61391

### Immunogen

Recombinant fusion protein containing a sequence corresponding to amino acids 52-750 of mouse CD10 (NP\_032630.2).

### Synonyms

Mme

## Contact

☎ | 400-999-6126

✉ | [cn.market@abclonal.com.cn](mailto:cn.market@abclonal.com.cn)

🌐 | [www.abclonal.com.cn](http://www.abclonal.com.cn)

## Product Information

### Source

Rabbit

### Isotype

IgG

### Purification

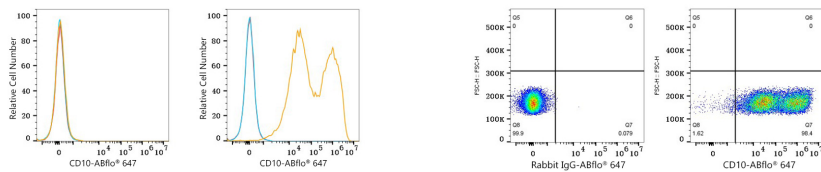
Affinity purification

### Storage

Store at 2-8°C. Avoid freeze.

Buffer: PBS with 0.03% proclin300,0.2% BSA,pH7.3.

## Validation Data



Flow cytometry:  $1 \times 10^6$  293T cells (negative control, left) and 293T (Transfection, right) cells were surface-stained with ABflo® 647 Rabbit anti-Mouse CD10 mAb (A25705, 5  $\mu$ l/Test, orange line) or ABflo® 647 Rabbit IgG isotype control (A22070, 5  $\mu$ l/Test, blue line). Non-fluorescently stained cells were used as blank control (red line).

Flow cytometry:  $1 \times 10^6$  293T (Transfection) cells were surface-stained with ABflo® 647 Rabbit IgG isotype control (A22070, 5  $\mu$ l/Test, left) or ABflo® 647 Rabbit anti-Mouse CD10 mAb (A25705, 5  $\mu$ l/Test, right).