

ABflo® 594 Rabbit anti-Mouse CD10 mAb

Catalog No.: A25706

Basic Information

Observed MW

Refer to figures

Calculated MW

86kDa

Category

Primary antibody

Applications

FC

Cross-Reactivity

Mouse

CloneNo number

ARC67050

Conjugate

ABflo® 594. Ex:588nm. Em:604nm.

Recommended Dilutions

FC 5 µl per 10⁶ cells in
100 µl volume

Background

Enables peptidase activity. Involved in amyloid-beta clearance; positive regulation of long-term synaptic potentiation; and sensory perception of pain. Acts upstream of or within amyloid-beta metabolic process. Located in several cellular components, including dendrite; neuron projection terminus; and synaptic vesicle. Is expressed in several structures, including alimentary system; central nervous system; genitourinary system; liver and biliary system; and mammary gland. Used to study Alzheimer's disease. Human ortholog(s) of this gene implicated in Alzheimer's disease; Charcot-Marie-Tooth disease axonal type 2T; cerebellar ataxia type 43; cerebral amyloid angiopathy; and membranous glomerulonephritis. Orthologous to human MME (membrane metalloendopeptidase).

Immunogen Information

Gene ID

17380

Swiss Prot

Q61391

Immunogen

Recombinant protein (or fragment). This information is considered to be commercially sensitive.

Synonyms

Mme

Contact

 | 400-999-6126

 | cn.market@abclonal.com.cn

 | www.abclonal.com.cn

Product Information

Source

Rabbit

Isotype

IgG

Purification

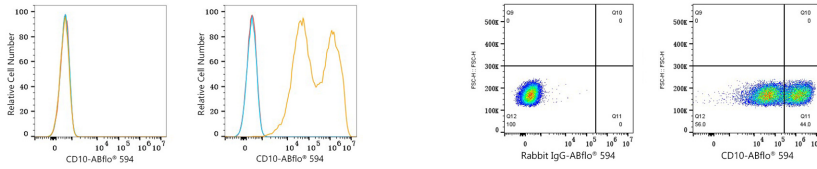
Affinity purification

Storage

Store at 2-8°C. Avoid freeze.

Buffer: PBS containing 0.2% BSA, preserved with proclin300 or sodium azide (as specified on the Certificate of Analysis), pH 7.3.

Validation Data



Flow cytometry: 1×10^6 293T cells (negative control, left) and 293T (Transfection, right) cells were surface-stained with ABflo® 594 Rabbit anti-Mouse CD10 mAb (A25706, 5 μ l/Test, orange line) or ABflo® 594 Rabbit IgG isotype control (A23821, 5 μ l/Test, blue line). Non-fluorescently stained cells were used as blank control (red line).

Flow cytometry: 1×10^6 293T (Transfection) cells were surface-stained with ABflo® 594 Rabbit IgG isotype control (A23821, 5 μ l/Test, left) or ABflo® 594 Rabbit anti-Mouse CD10 mAb (A25706, 5 μ l/Test, right).