

CD10 Rabbit mAb

Catalog No.: A25707 **Recombinant**

Basic Information

Observed MW

100 kDa

Calculated MW

86kDa

Category

Primary antibody

Applications

WB,FC,ELISA

Cross-Reactivity

Mouse

CloneNo number

ARC67050

Background

Enables peptidase activity. Involved in amyloid-beta clearance; positive regulation of long-term synaptic potentiation; and sensory perception of pain. Acts upstream of or within amyloid-beta metabolic process. Located in several cellular components, including dendrite; neuron projection terminus; and synaptic vesicle. Is expressed in several structures, including alimentary system; central nervous system; genitourinary system; liver and biliary system; and mammary gland. Used to study Alzheimer's disease. Human ortholog(s) of this gene implicated in Alzheimer's disease; Charcot-Marie-Tooth disease axonal type 2T; cerebellar ataxia type 43; cerebral amyloid angiopathy; and membranous glomerulonephritis. Orthologous to human MME (membrane metalloendopeptidase).

Recommended Dilutions

WB 1:1000 - 1:5000

FC 1:500 - 1:1000

ELISA Recommended starting concentration is 1 µg/mL. Please optimize the concentration based on your specific assay requirements.

Immunogen Information

Gene ID

17380

Swiss Prot

Q61391

Immunogen

Recombinant protein (or fragment). This information is considered to be commercially sensitive.

Synonyms

Mme

Contact

☎ | 400-999-6126

✉ | cn.market@abclonal.com.cn

🌐 | www.abclonal.com.cn

Product Information

Source

Rabbit

Isotype

IgG

Purification

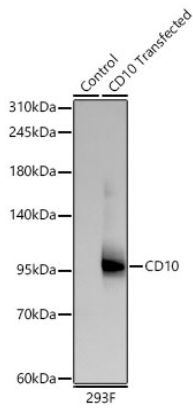
Affinity purification

Storage

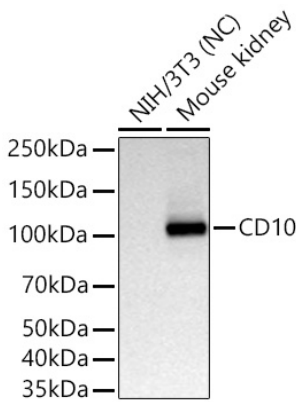
Store at -20°C. Avoid freeze / thaw cycles.

Buffer: PBS with 0.09% Sodium azide, 0.05% BSA, 50% glycerol, pH7.3.

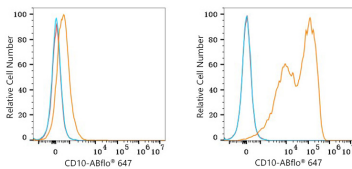
Validation Data



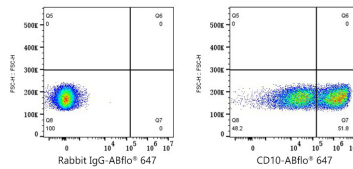
Western blot analysis of lysates from wild type (WT) and 293F cells transfected with CD10 using CD10 Rabbit mAb (A25707) at 1:3000 dilution incubated overnight at 4°C.
 Secondary antibody: HRP-conjugated Goat anti-Rabbit IgG (H+L) (AS014) at 1:10000 dilution.
 Lysates/proteins: 30 µg per lane.
 Blocking buffer: 3% nonfat dry milk in TBST.
 Detection: ECL Basic Kit (RM00020)
 Exposure time: 60 s.



Western blot analysis of various lysates using CD10 Rabbit mAb (A25707) at 1:5000 dilution incubated overnight at 4°C.
 Secondary antibody: HRP-conjugated Goat anti-Rabbit IgG (H+L) (AS014) at 1:10000 dilution.
 Lysates/proteins: 25 µg per lane.
 Blocking buffer: 3% nonfat dry milk in TBST.
 Detection: ECL Basic Kit (RM00020).
 Negative control (NC): NIH/3T3
 Exposure time: 20 s.



Flow cytometry: 1×10^6 293T cells (negative control, left) and 293T cells (right) were surface-stained with CD10 Rabbit mAb (A25707, 2 µg/mL, orange line) or Rabbit IgG isotype control (AC042, 2 µg/mL, blue line), followed by Alexa Fluor® 647 conjugated goat anti-rabbit pAb staining. Non-fluorescently stained cells were used as blank control (red line).



Flow cytometry: 1×10^6 293T (Transfection) cells were surface-stained with Rabbit IgG isotype control (AC042, 2 µg/mL, left) or CD10 Rabbit mAb (A25707, 2 µg/mL, right), followed by Alexa Fluor® 647 conjugated goat anti-rabbit pAb staining.