

ABflo® 647 Rabbit anti-Human CD50(ICAM-3) mAb

Catalog No.: A25709

Basic Information

Observed MW

Calculated MW

60kDa

Category

Primary antibody

Applications

FC

Cross-Reactivity

Human

CloneNo number

ARC67042-ABflo647

Conjugate

ABflo® 647. Ex:648nm. Em:664nm.

Recommended Dilutions

FC 5 µl per 10⁶ cells in
100 µl volume

Background

The protein encoded by this gene is a member of the intercellular adhesion molecule (ICAM) family. All ICAM proteins are type I transmembrane glycoproteins, contain 2-9 immunoglobulin-like C2-type domains, and bind to the leukocyte adhesion LFA-1 protein. This protein is constitutively and abundantly expressed by all leucocytes and may be the most important ligand for LFA-1 in the initiation of the immune response. It functions not only as an adhesion molecule, but also as a potent signalling molecule. Alternative splicing results in multiple transcript variants encoding different isoforms.

Immunogen Information

Gene ID

3385

Swiss Prot

P32942

Immunogen

Recombinant fusion protein containing a sequence corresponding to amino acids 30-114 of human CD50(ICAM-3) (NP_002153.2).

Synonyms

CD50; CDW50; ICAM-R

Contact

☎ | 400-999-6126

✉ | cn.market@abclonal.com.cn

🌐 | www.abclonal.com.cn

Product Information

Source

Rabbit

Isotype

IgG

Purification

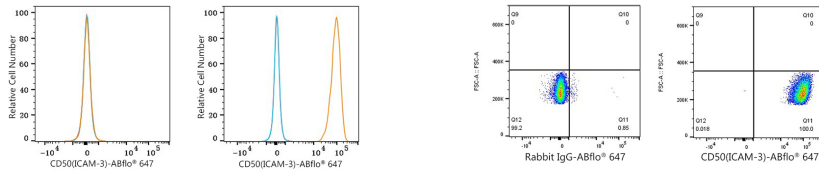
Affinity purification

Storage

Store at 2-8°C. Avoid freeze.

Buffer: PBS with 0.03% proclin300,0.2% BSA,pH7.3.

Validation Data



Flow cytometry: 1×10^6 Daudi cells (negative control, left) and U-937 cells (right) were surface-stained with ABflo® 647 Rabbit anti-Human CD50(ICAM-3) mAb (A25709, 5 μ l/Test, orange line) or ABflo® 647 Rabbit IgG isotype control (A22070, 5 μ l/Test, blue line). Non-fluorescently stained cells were used as blank control (red line).

Flow cytometry: 1×10^6 U-937 cells were surface-stained with ABflo® 647 Rabbit IgG isotype control (A22070, 5 μ l/Test, left) or ABflo® 647 Rabbit anti-Human CD50(ICAM-3) mAb (A25709, 5 μ l/Test, right).