

PE Rabbit anti-Human CD10 mAb

Catalog No.: A25723

Basic Information

Observed MW

Refer to figures

Calculated MW

86kDa

Category

Primary antibody

Applications

FC

Cross-Reactivity

Human

CloneNo number

ARC55330-PE

Conjugate

PE. Ex:565nm. Em:574nm.

Recommended Dilutions

FC 5 μ l per 10^6 cells in
100 μ l volume

Background

The protein encoded by this gene is a type II transmembrane glycoprotein and a common acute lymphocytic leukemia antigen that is an important cell surface marker in the diagnosis of human acute lymphocytic leukemia (ALL). The encoded protein is present on leukemic cells of pre-B phenotype, which represent 85% of cases of ALL. This protein is not restricted to leukemic cells, however, and is found on a variety of normal tissues. The protein is a neutral endopeptidase that cleaves peptides at the amino side of hydrophobic residues and inactivates several peptide hormones including glucagon, enkephalins, substance P, neurotensin, oxytocin, and bradykinin.

Immunogen Information

Gene ID

4311

Swiss Prot

P08473

Immunogen

Recombinant fusion protein containing a sequence corresponding to amino acids 52-750 of human CD10 (NP_000893.2).

Synonyms

NEP; SFE; CD10; CALLA; CMT2T; SCA43

Contact

☎ | 400-999-6126

✉ | cn.market@abclonal.com.cn

🌐 | www.abclonal.com.cn

Product Information

Source

Rabbit

Isotype

IgG

Purification

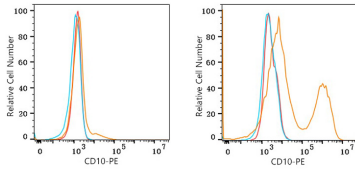
Affinity purification

Storage

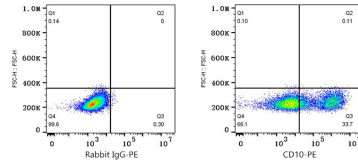
Store at 2-8°C. Avoid freeze.

Buffer: PBS with 0.03% proclin300,0.2% BSA,pH7.3.

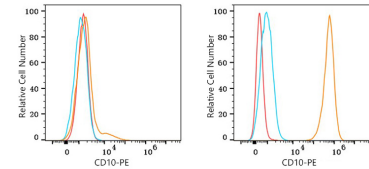
Validation Data



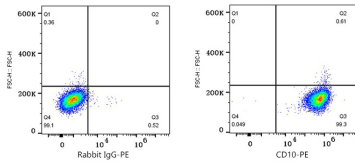
Flow cytometry: 1×10^6 A549 cells (negative control, left) and U-138MG cells (right) were surface-stained with PE Rabbit anti-Human CD10 mAb (A25723,5 $\mu\text{l}/\text{Test}$, orange line) or PE Rabbit IgG isotype control (A24172,5 $\mu\text{l}/\text{Test}$, blue line). Non-fluorescently stained cells were used as blank control (red line).



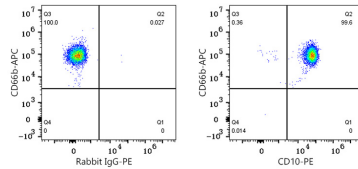
Flow cytometry: 1×10^6 U-138MG cells were surface-stained with PE Rabbit IgG isotype control (A24172,5 $\mu\text{l}/\text{Test}$, left) or PE Rabbit anti-Human CD10 mAb (A25723,5 $\mu\text{l}/\text{Test}$, right).



Flow cytometry: 1×10^6 A549 cells (negative control, left) and Daudi cells (right) were surface-stained with PE Rabbit anti-Human CD10 mAb (A25723,5 $\mu\text{l}/\text{Test}$, orange line) or PE Rabbit IgG isotype control (A24172,5 $\mu\text{l}/\text{Test}$, blue line). Non-fluorescently stained cells were used as blank control (red line).



Flow cytometry: 1×10^6 Daudi cells were surface-stained with PE Rabbit IgG isotype control (A24172,5 $\mu\text{l}/\text{Test}$, left) or PE Rabbit anti-Human CD10 mAb (A25723,5 $\mu\text{l}/\text{Test}$, right).



Flow cytometry: 1×10^6 Human Neutrophil granulocytes were surface-stained with APC Rabbit anti-Human CD66b mAb (A26616,5 $\mu\text{l}/\text{Test}$) and PE Rabbit anti-Human CD10 mAb (A25723,5 $\mu\text{l}/\text{Test}$, right) or PE Rabbit IgG isotype control (A24172,5 $\mu\text{l}/\text{Test}$, left).