

PE Rabbit anti-Human/Monkey PD-1/CD279 mAb

Catalog No.: A25730

Basic Information

Observed MW

Calculated MW

32kDa

Category

Primary antibody

Applications

FC

Cross-Reactivity

Human, Cynomolgus

CloneNo number

ARC64145

Conjugate

PE. Ex:565nm. Em:574nm.

Background

Programmed cell death protein 1 (PDCD1) is an immune-inhibitory receptor expressed in activated T cells; it is involved in the regulation of T-cell functions, including those of effector CD8+ T cells. In addition, this protein can also promote the differentiation of CD4+ T cells into T regulatory cells. PDCD1 is expressed in many types of tumors including melanomas, and has demonstrated to play a role in anti-tumor immunity. Moreover, this protein has been shown to be involved in safeguarding against autoimmunity, however, it can also contribute to the inhibition of effective anti-tumor and anti-microbial immunity.

Recommended Dilutions

FC 5 µl per 10⁶ cells in
100 µl volume

Immunogen Information

Gene ID

5133

Swiss Prot

Q15116

Immunogen

Recombinant protein (or fragment). This information is considered to be commercially sensitive.

Synonyms

PD1; PD-1; CD279; SLEB2; hPD-1; hPD-I; hSLE1

Contact

☎ | 400-999-6126

✉ | cn.market@abclonal.com.cn

🌐 | www.abclonal.com.cn

Product Information

Source

Rabbit

Isotype

IgG

Purification

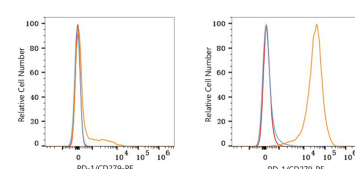
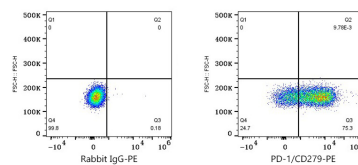
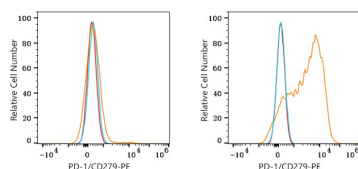
Affinity purification

Storage

Store at 2-8°C. Avoid freeze.

Buffer: PBS containing 0.2% BSA, preserved with proclin300 or sodium azide (as specified on the Certificate of Analysis), pH 7.3.

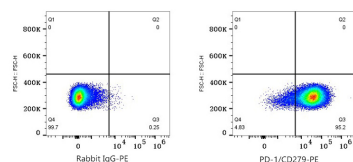
Validation Data



Flow cytometry: 1×10^6 293T cells (negative control, left) and MOLT-4 cells (right) were surface-stained with PE Rabbit anti-Human PD-1/CD279 mAb (A25730, 5 µl/Test, orange line) or PE Rabbit IgG isotype control (A24172, 5 µl/Test, blue line). Non-fluorescently stained cells were used as blank control (red line).

Flow cytometry: 1×10^6 MOLT-4 cells were surface-stained with PE Rabbit IgG isotype control (A24172, 5 µl/Test, left) or PE Rabbit anti-Human PD-1/CD279 mAb (A25730, 5 µl/Test, right).

Flow cytometry: 1×10^6 Human PBMC (negative control, left) and Human PBMC (treated with PHA, right) were surface-stained with PE Rabbit anti-Human PD-1/CD279 mAb (A25730, 5 µl/Test, orange line) or PE Rabbit IgG isotype control (A24172, 5 µl/Test, blue line). Non-fluorescently stained cells were used as blank control (red line).



Flow cytometry: 1×10^6 Human PBMC (treated with PHA, right) were surface-stained with PE Rabbit IgG isotype control (A24172, 5 µl/Test, left) or PE Rabbit anti-Human PD-1/CD279 mAb (A25730, 5 µl/Test, right).