

# APC Rabbit anti-Human PD-1/CD279 mAb

Catalog No.: A25731

## Basic Information

### Observed MW

### Calculated MW

32kDa

### Category

Primary antibody

### Applications

FC

### Cross-Reactivity

Human

### CloneNo number

ARC64145-APC

### Conjugate

APC. Ex:650nm. Em:660nm.

## Recommended Dilutions

FC 5  $\mu$ l per  $10^6$  cells in  
100  $\mu$ l volume

## Background

Programmed cell death protein 1 (PDCD1) is an immune-inhibitory receptor expressed in activated T cells; it is involved in the regulation of T-cell functions, including those of effector CD8+ T cells. In addition, this protein can also promote the differentiation of CD4+ T cells into T regulatory cells. PDCD1 is expressed in many types of tumors including melanomas, and has demonstrated to play a role in anti-tumor immunity. Moreover, this protein has been shown to be involved in safeguarding against autoimmunity, however, it can also contribute to the inhibition of effective anti-tumor and anti-microbial immunity.

## Immunogen Information

### Gene ID

5133

### Swiss Prot

Q15116

### Immunogen

Recombinant fusion protein containing a sequence corresponding to amino acids 25-168 of human PD-1/CD279 (NP\_005009.2).

### Synonyms

PD1; PD-1; CD279; SLEB2; hPD-1; hPD-I; hSLE1

## Contact

 | 400-999-6126

 | [cn.market@abclonal.com.cn](mailto:cn.market@abclonal.com.cn)

 | [www.abclonal.com.cn](http://www.abclonal.com.cn)

## Product Information

### Source

Rabbit

### Isotype

IgG

### Purification

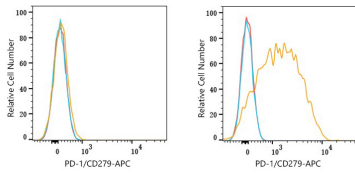
Affinity purification

### Storage

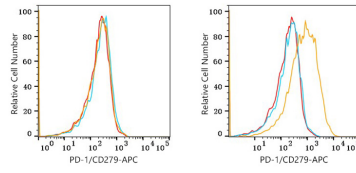
Store at 2-8°C. Avoid freeze.

Buffer: PBS with 0.03% proclin300,0.2% BSA,pH7.3.

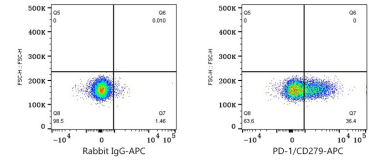
## Validation Data



Flow cytometry:  $1 \times 10^6$  293T cells (negative control, left) and MOLT-4 cells (right) were surface-stained with APC Rabbit anti-Human PD-1/CD279 mAb (A25731, 5  $\mu$ l/Test, orange line) or APC Rabbit IgG isotype control (A24173, 5  $\mu$ l/Test, blue line). Non-fluorescently stained cells were used as blank control (red line).



Flow cytometry:  $1 \times 10^6$  293T cells (negative control, left) and MOLT-4 cells (right) were surface-stained with APC Rabbit anti-Human PD-1/CD279 mAb (A25731, 5  $\mu$ l/Test, orange line) or APC Rabbit IgG isotype control (A24173, 5  $\mu$ l/Test, blue line). Non-fluorescently stained cells were used as blank control (red line).



Flow cytometry:  $1 \times 10^6$  MOLT-4 cells were surface-stained with APC Rabbit IgG isotype control (A24173, 5  $\mu$ l/Test, left) or APC Rabbit anti-Human PD-1/CD279 mAb (A25731, 5  $\mu$ l/Test, right).