

ABflo® 488 Rabbit anti-Human/Monkey PD-1/CD279 mAb

Catalog No.: A25732 **1 Publications**

Basic Information

Observed MW

Calculated MW
32kDa

Category
Primary antibody

Applications
FC

Cross-Reactivity
Human, Cynomolgus

CloneNo number
ARC64145

Conjugate
ABflo® 488. Ex:491nm. Em:516nm.

Recommended Dilutions

FC 5 µl per 10⁶ cells in
100 µl volume

Background

Programmed cell death protein 1 (PDCD1) is an immune-inhibitory receptor expressed in activated T cells; it is involved in the regulation of T-cell functions, including those of effector CD8+ T cells. In addition, this protein can also promote the differentiation of CD4+ T cells into T regulatory cells. PDCD1 is expressed in many types of tumors including melanomas, and has demonstrated to play a role in anti-tumor immunity. Moreover, this protein has been shown to be involved in safeguarding against autoimmunity, however, it can also contribute to the inhibition of effective anti-tumor and anti-microbial immunity.

Immunogen Information

Gene ID 5133	Swiss Prot Q15116
------------------------	-----------------------------

Immunogen

Recombinant protein (or fragment). This information is considered to be commercially sensitive.

Synonyms

PD1; PD-1; CD279; SLEB2; hPD-1; hPD-I; hSLE1

Contact

		400-999-6126
		cn.market@abclonal.com.cn
		www.abclonal.com.cn

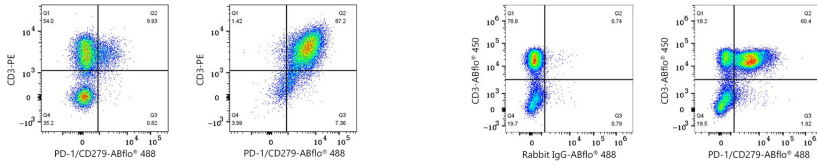
Product Information

Source Rabbit	Isotype IgG	Purification Affinity purification
-------------------------	-----------------------	--

Storage

Store at 2-8°C. Avoid freeze.
Buffer: PBS containing 0.2% BSA, preserved with proclin300 or sodium azide (as specified on the Certificate of Analysis), pH 7.3.

Validation Data



Flow cytometry: 1×10^6 Human PBMC (untreated, left) and Human PBMC (treated with 5 $\mu\text{g}/\text{mL}$ PHA for 72 hours, right) were surface-stained with PE Rabbit anti-Human/Monkey CD3 mAb (A27110, 5 $\mu\text{l}/\text{Test}$) and ABflo® 488 Rabbit anti-Human/Monkey PD-1/CD279 mAb (A25732, 5 $\mu\text{l}/\text{Test}$). Cells in the lymphocyte gate were used for analysis.

Flow cytometry: 1×10^6 Cynomolgus PBMC were surface-stained with ABflo® 450 Rabbit anti-Human/Monkey CD3 mAb (A27177, 5 $\mu\text{l}/\text{Test}$) and ABflo® 488 Rabbit IgG isotype control (A22069, 5 $\mu\text{l}/\text{Test}$, left) or ABflo® 488 Rabbit anti-Human/Monkey PD-1/CD279 mAb (A25732, 5 $\mu\text{l}/\text{Test}$, right). Cells in the lymphocyte gate were used for analysis.