

# ABflo® 488 Rabbit anti-Human CD370/CLEC9A mAb

Catalog No.: A25734

## Basic Information

---

### Observed MW

Refer to figures

### Calculated MW

27kDa

### Category

Primary antibody

### Applications

FC

### Cross-Reactivity

Human

### CloneNo number

ARC64044-ABflo488

### Conjugate

ABflo® 488. Ex:491nm. Em:516nm.

## Recommended Dilutions

---

**FC**                      5 µl per 10<sup>6</sup> cells in  
   100 µl volume

## Background

---

CLEC9A is a group V C-type lectin-like receptor (CTLR) that functions as an activation receptor and is expressed on myeloid lineage cells.

## Immunogen Information

---

### Gene ID

283420

### Swiss Prot

Q6UXN8

### Immunogen

Recombinant fusion protein containing a sequence corresponding to amino acids 110-241 of human CD370/CLEC9A (NP\_997228.1).

### Synonyms

CD370; DNGR1; DNGR-1; UNQ9341

## Contact

---

 | 400-999-6126

 | [cn.market@abclonal.com.cn](mailto:cn.market@abclonal.com.cn)

 | [www.abclonal.com.cn](http://www.abclonal.com.cn)

## Product Information

---

### Source

Rabbit

### Isotype

IgG

### Purification

Affinity purification

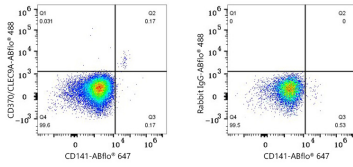
### Storage

Store at 2-8°C. Avoid freeze.

Buffer: PBS with 0.03% proclin300,0.2% BSA,pH7.3.

## Validation Data

---



Flow cytometry:  $1 \times 10^6$  Human PBMC were surface-stained with ABflo® 647 Rabbit anti-Human CD141/Thrombomodulin mAb (A22155, 5  $\mu$ l/Test) and ABflo® 488 Rabbit anti-Human CD370/CLEC9A mAb (A25734, 5  $\mu$ l/Test, left) or ABflo® 488 Rabbit IgG isotype control (A22069, 5  $\mu$ l/Test, right). Cells in the monocytes gate were used for analysis.