

# CD370/CLEC9A Rabbit mAb

Catalog No.: A25737 **Recombinant**

## Basic Information

### Observed MW

Refer to figures

### Calculated MW

27kDa

### Category

Primary antibody

### Applications

ELISA,FC

### Cross-Reactivity

Human

### CloneNo number

ARC64044

## Background

CLEC9A is a group V C-type lectin-like receptor (CTLR) that functions as an activation receptor and is expressed on myeloid lineage cells.

## Recommended Dilutions

FC 1:500 - 1:1000

## Immunogen Information

### Gene ID

283420

### Swiss Prot

Q6UXN8

### Immunogen

Recombinant fusion protein containing a sequence corresponding to amino acids 110-241 of human CD370/CLEC9A (NP\_997228.1).

### Synonyms

CD370; DNGR1; DNGR-1; UNQ9341

## Contact

☎ | 400-999-6126

✉ | [cn.market@abclonal.com.cn](mailto:cn.market@abclonal.com.cn)

🌐 | [www.abclonal.com.cn](http://www.abclonal.com.cn)

## Product Information

### Source

Rabbit

### Isotype

IgG

### Purification

Affinity purification

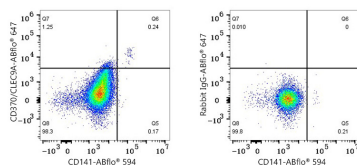
### Storage

Store at -20°C. Avoid freeze / thaw cycles.

Buffer: PBS with 0.05% proclin300,0.05% BSA,50% glycerol,pH7.3.

## Validation Data

---



Flow cytometry: 1X10<sup>6</sup> Human PBMC were surface-stained with CD370/CLEC9A Rabbit mAb (A25737, 5 µl/Test, left) or Rabbit IgG isotype control (AC042, 2 µg/mL, right), followed by Alexa Fluor® 647 conjugated goat anti-rabbit pAb staining and ABflo® 594 Rabbit anti-Human CD141/Thrombomodulin mAb (A24180, 5 µl/Test). Cells in the monocytes gate were used for analysis.