

# Cytokeratin 7 (KRT7) Rabbit pAb

Catalog No.: A2574 **1 Publications**

## Basic Information

### Observed MW

51kDa

### Calculated MW

51kDa

### Category

Primary antibody

### Applications

ELISA,WB,IF/ICC

### Cross-Reactivity

Human, Mouse, Rat

## Background

The protein encoded by this gene is a member of the keratin gene family. The type II cytokeratins consist of basic or neutral proteins which are arranged in pairs of heterotypic keratin chains coexpressed during differentiation of simple and stratified epithelial tissues. This type II cytokeratin is specifically expressed in the simple epithelia lining the cavities of the internal organs and in the gland ducts and blood vessels. The genes encoding the type II cytokeratins are clustered in a region of chromosome 12q12-q13. Alternative splicing may result in several transcript variants; however, not all variants have been fully described.

## Recommended Dilutions

<b>WB</b>	1:500 - 1:2000
<b>IF/ICC</b>	1:50 - 1:200

## Immunogen Information

### Gene ID

3855

### Swiss Prot

P08729

### Immunogen

Recombinant fusion protein containing a sequence corresponding to amino acids 230-469 of human Cytokeratin 7 (Cytokeratin 7 (KRT7)) (NP\_005547.3).

### Synonyms

K7; CK7; SCL; K2C7; Cytokeratin 7 (KRT7)

## Contact

☎ | 400-999-6126

✉ | [cn.market@abclonal.com.cn](mailto:cn.market@abclonal.com.cn)

🌐 | [www.abclonal.com.cn](http://www.abclonal.com.cn)

## Product Information

### Source

Rabbit

### Isotype

IgG

### Purification

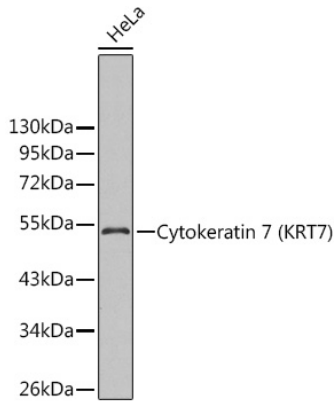
Affinity purification

### Storage

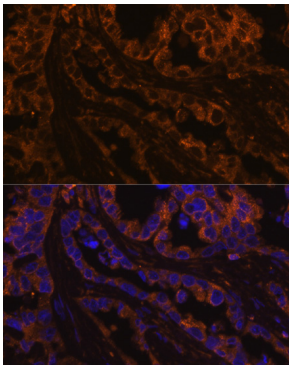
Store at -20°C. Avoid freeze / thaw cycles.

Buffer: PBS with 0.02% sodium azide,50% glycerol,pH7.3.

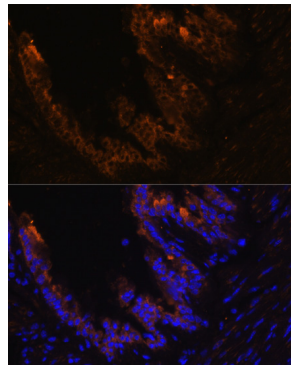
## Validation Data



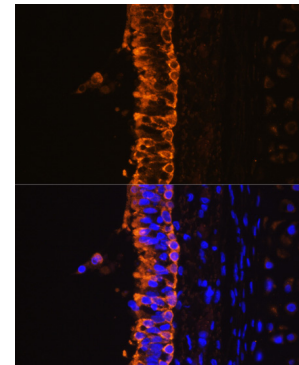
Western blot analysis of extracts of HeLa cells, using Cytokeratin 7 (Cytokeratin 7 (KRT7)) antibody (A2574).  
Secondary antibody: HRP Goat Anti-Rabbit IgG (H+L) (AS014) at 1:10000 dilution.  
Lysates/proteins: 25µg per lane.  
Blocking buffer: 3% nonfat dry milk in TBST.



Immunofluorescence analysis of human lung cancer cells using Cytokeratin 7 (Cytokeratin 7 (KRT7)) antibody (A2574) at dilution of 1:100. Blue: DAPI for nuclear staining.



Immunofluorescence analysis of mouse bronchus cells using Cytokeratin 7 (Cytokeratin 7 (KRT7)) antibody (A2574) at dilution of 1:100. Blue: DAPI for nuclear staining.



Immunofluorescence analysis of rat bronchus cells using Cytokeratin 7 (Cytokeratin 7 (KRT7)) antibody (A2574) at dilution of 1:100. Blue: DAPI for nuclear staining.