

Syk Rabbit mAb

Catalog No.: A25741 **Recombinant**

Basic Information

Observed MW

70kDa

Calculated MW

72kDa/70kDa

Category

Primary antibody

Applications

WB,IF/ICC,IP,FC (intra),ELISA

Cross-Reactivity

Human, Mouse, Rat

CloneNo number

ARC66891

Background

This gene encodes a member of the family of non-receptor type Tyr protein kinases. This protein is widely expressed in hematopoietic cells and is involved in coupling activated immunoreceptors to downstream signaling events that mediate diverse cellular responses, including proliferation, differentiation, and phagocytosis. It is thought to be a modulator of epithelial cell growth and a potential tumour suppressor in human breast carcinomas. Alternatively spliced transcript variants encoding different isoforms have been found for this gene.

Recommended Dilutions

WB 1:500 - 1:1000

IF/ICC 1:50 - 1:200

IP 0.5µg-4µg antibody for
400µg-600µg extracts of
whole cells

FC (intra) 1:500 - 1:1000

ELISA Recommended starting
concentration is 1 µg/mL.
Please optimize the
concentration based on
your specific assay
requirements.

Immunogen Information

Gene ID

6850

Swiss Prot

P43405

Immunogen

A synthetic peptide corresponding to a sequence within amino acids 251-350 of human Syk (NP_003168.2).

Synonyms

IMD82; p72-Syk

Product Information

Source

Rabbit

Isotype

IgG

Purification

Affinity purification

Storage

Store at -20°C. Avoid freeze / thaw cycles.

Buffer: PBS with 0.05% proclin300,0.05% BSA,50% glycerol,pH7.3.

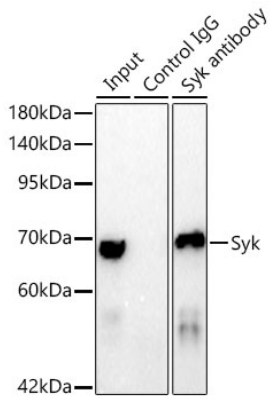
Contact

☎ | 400-999-6126

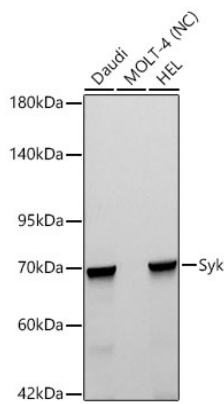
✉ | cn.market@abclonal.com.cn

🌐 | www.abclonal.com.cn

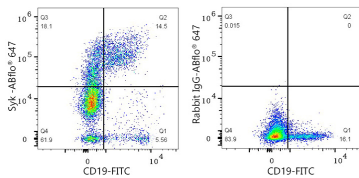
Validation Data



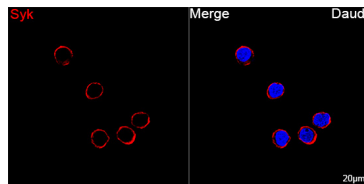
Immunoprecipitation of Syk from 500 µg extracts of HEL cells was performed using 2 µg of Syk Rabbit mAb (A25741). Rabbit IgG isotype control(AC042) was used to precipitate the Control IgG sample. IP samples were eluted with 1X non-reducing Laemmli Buffer. The Input lane represents 10% of the total input. Western blot analysis of immunoprecipitates was conducted using Syk Rabbit mAb (A25741) at a dilution of 1:1000.



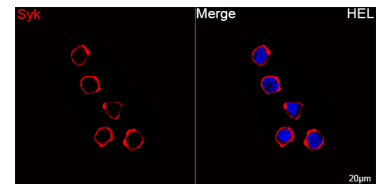
Western blot analysis of various lysates using Syk Rabbit mAb (A25741) at 1:1000 dilution incubated overnight at 4°C.
 Secondary antibody: HRP-conjugated Goat anti-Rabbit IgG (H+L) (AS014) at 1:10000 dilution.
 Lysates/proteins: 25 µg per lane.
 Blocking buffer: 3% nonfat dry milk in TBST.
 Detection: ECL Basic Kit (RM00020)
 Negative control (NC): MOLT-4
 Exposure time: 45 s.



Flow cytometry: 1×10^6 Human PBMC were surface-stained with FITC Mouse anti-Human CD19 mAb (A22815, 5 µl/Test) followed by intracellular staining with Syk Rabbit mAb (A25741, 5 µl/Test, left) or Rabbit IgG isotype control (AC042, 2 µg/mL, right).

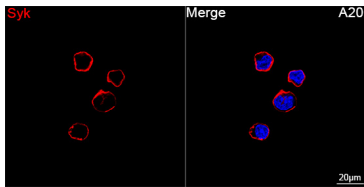


Confocal imaging of Daudi cells using Syk Rabbit mAb (A25741, dilution 1:200) followed by a further incubation with Cy3 Goat Anti-Rabbit IgG (H+L) (AS007, dilution 1:500) (Red). DAPI was used for nuclear staining (Blue). Objective: 100x.

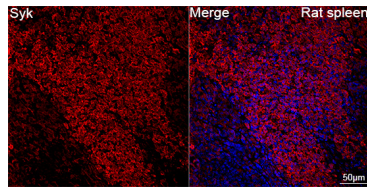


Confocal imaging of HEL cells using Syk Rabbit mAb (A25741, dilution 1:200) followed by a further incubation with Cy3 Goat Anti-Rabbit IgG (H+L) (AS007, dilution 1:500) (Red). DAPI was used for nuclear staining (Blue). Objective: 100x.

Validation Data



Confocal imaging of A20 cells using Syk Rabbit mAb (A25741, dilution 1:200) followed by a further incubation with Cy3 Goat Anti-Rabbit IgG (H+L) (AS007, dilution 1:500) (Red). DAPI was used for nuclear staining (Blue). Objective: 100x.



Confocal imaging of paraffin-embedded Rat spleen tissue using Syk Rabbit mAb (A25741, dilution 1:200) followed by a further incubation with Cy3 Goat Anti-Rabbit IgG (H+L) (AS007, dilution 1:500) (Red). DAPI was used for nuclear staining (Blue). High pressure antigen retrieval performed with 0.01M Citrate Buffer (pH 6.0) prior to IF staining. Objective: 40x.