

ABflo® 594 Rabbit anti-Human CD300a mAb

Catalog No.: A25743

Basic Information

Observed MW

Calculated MW

33kDa/20kDa/12kDa/16.5kDa

Category

Primary antibody

Applications

FC

Cross-Reactivity

Human

CloneNo number

ARC67454

Conjugate

ABflo® 594. Ex:588nm. Em:604nm.

Recommended Dilutions

FC 5 µl per 10⁶ cells in
100 µl volume

Background

This gene encodes a member of the CD300 glycoprotein family of cell surface proteins found on leukocytes involved in immune response signaling pathways. This gene is located on chromosome 17 in a cluster with all but one of the other family members. Multiple transcript variants encoding different isoforms have been found for this gene.

Immunogen Information

Gene ID

11314

Swiss Prot

Q9UGN4

Immunogen

Recombinant protein (or fragment). This information is considered to be commercially sensitive.

Synonyms

IRC1; IRC2; CLM-8; IRp60; IGSF12; CMRF35H; CMRF-35H; CMRF35-H; CMRF35H9; CMRF35-H9; IRC1/IRC2; CMRF-35-H9

Contact

☎ | 400-999-6126

✉ | cn.market@abclonal.com.cn

🌐 | www.abclonal.com.cn

Product Information

Source

Rabbit

Isotype

IgG

Purification

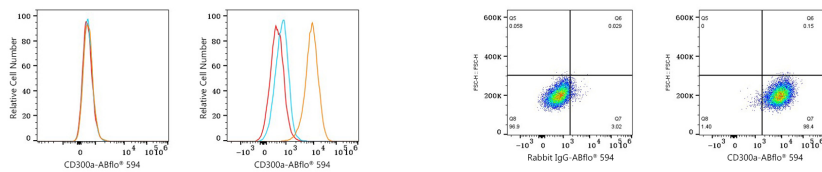
Affinity purification

Storage

Store at 2-8°C. Avoid freeze.

Buffer: PBS containing 0.2% BSA, preserved with proclin300 or sodium azide (as specified on the Certificate of Analysis), pH 7.3.

Validation Data



Flow cytometry: 1×10^6 Jurkat cells (negative control, left) and RPMI 8226 cells (right) were surface-stained with ABflo® 594 Rabbit anti-Human CD300a mAb (A25743, 5 $\mu\text{l}/\text{Test}$, orange line) or ABflo® 594 Rabbit IgG isotype control (A23821, 5 $\mu\text{l}/\text{Test}$, blue line). Non-fluorescently stained cells were used as blank control (red line).

Flow cytometry: 1×10^6 RPMI 8226 cells were surface-stained with ABflo® 594 Rabbit IgG isotype control (A23821, 5 $\mu\text{l}/\text{Test}$, left) or ABflo® 594 Rabbit anti-Human CD300a mAb (A25743, 5 $\mu\text{l}/\text{Test}$, right).