

# ABflo® 700 Mouse IgG 2a isotype control

Catalog No.: A25744

## Basic Information

---

**Observed MW**

**Calculated MW**

**Category**

Primary antibody

**Applications**

FC

**Cross-Reactivity**

**CloneNo number**

AMC50006-ABf700

**Conjugate**

ABflo® 700. Ex:690nm. Em:713nm.

## Background

---

## Recommended Dilutions

---

FC 5 µl per 10<sup>6</sup> cells in  
100 µl volume

## Immunogen Information

---

Gene ID

Swiss Prot

Immunogen

Synonyms

## Contact

---

☎ | 400-999-6126

✉ | [cn.market@abclonal.com.cn](mailto:cn.market@abclonal.com.cn)

🌐 | [www.abclonal.com.cn](http://www.abclonal.com.cn)

## Product Information

---

**Source**

Mouse

**Isotype**

IgG

**Purification**

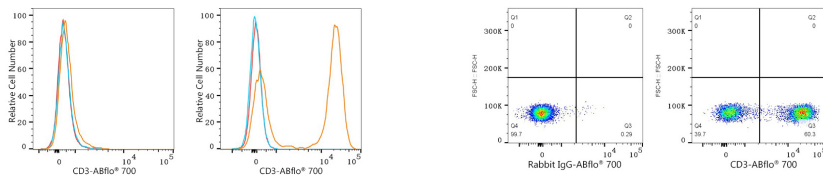
Affinity purification

**Storage**

Store at 2-8°C. Avoid freeze.

Buffer: PBS with 0.03% proclin300,pH7.3.

## Validation Data



Flow cytometry:  $1 \times 10^6$  Raji cells (negative control, left) and Human PBMC (right) were surface-stained with ABflo® 700 Mouse anti-Human CD3 mAb (A24943, 5  $\mu$ l/Test, orange line) or ABflo® 700 Mouse IgG 2a isotype control (A25744, 5  $\mu$ l/Test, blue line). Non-fluorescently stained cells were used as blank control (red line).

Flow cytometry:  $1 \times 10^6$  Human PBMC were surface-stained with ABflo® 700 Mouse IgG 2a isotype control (A25744, 5  $\mu$ l/Test, left) or ABflo® 700 Mouse anti-Human CD3 mAb (A24943, 5  $\mu$ l/Test, right).