

# ABflo® 594 Rabbit anti-Mouse CD252 (OX40 Ligand) mAb

Catalog No.: A25747

## Basic Information

### Observed MW

### Calculated MW

22kDa

### Category

Primary antibody

### Applications

IF/ICC,FC

### Cross-Reactivity

Mouse

### CloneNo number

ARC66508-ABflo594

### Conjugate

ABflo® 594. Ex:588nm. Em:604nm.

## Recommended Dilutions

IF/ICC 1:50 - 1:200

FC 5 µl per 10<sup>6</sup> cells in  
100 µl volume

## Background

Enables tumor necrosis factor receptor binding activity. Involved in several processes, including T cell activation; regulation of gene expression; and regulation of lymphocyte activation. Acts upstream of or within cholesterol metabolic process; inflammatory response; and negative regulation of cytokine production. Predicted to be located in cell surface. Predicted to be active in extracellular space. Is expressed in sensory organ and skeleton. Used to study primary pulmonary hypertension and type 1 diabetes mellitus. Human ortholog(s) of this gene implicated in myocardial infarction. Orthologous to human TNFSF4 (TNF superfamily member 4).

## Immunogen Information

### Gene ID

22164

### Swiss Prot

P43488

### Immunogen

Recombinant fusion protein containing a sequence corresponding to amino acids 51-198 of mouse CD252 (OX40 Ligand) (NP\_033478.1).

### Synonyms

Ath1; gp34; Ath-1; Ox40l; TXGP1; CD134L; OX-40L; Tnlg2b; Txgp1l

## Contact

☎ | 400-999-6126

✉ | [cn.market@abclonal.com.cn](mailto:cn.market@abclonal.com.cn)

🌐 | [www.abclonal.com.cn](http://www.abclonal.com.cn)

## Product Information

### Source

Rabbit

### Isotype

IgG

### Purification

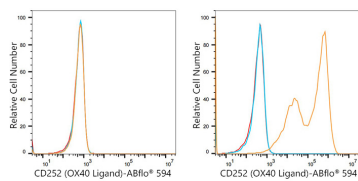
Affinity purification

### Storage

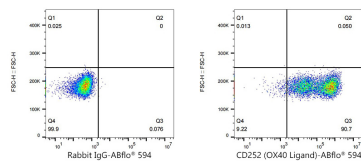
Store at 2-8°C. Avoid freeze.

Buffer: PBS with 0.03% proclin300,0.2% BSA,pH7.3.

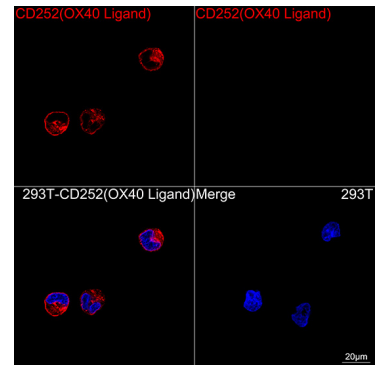
## Validation Data



Flow cytometry:  $1 \times 10^6$  293T cells (negative control, left) and 293T (Transfection, right) cells were surface-stained with ABflo® 594 Rabbit anti-Mouse CD252 (OX40 Ligand) mAb (A25747, 5  $\mu$ l/Test, orange line) or ABflo® 594 Rabbit IgG isotype control (A23821, 5  $\mu$ l/Test, blue line). Non-fluorescently stained cells were used as blank control (red line).



Flow cytometry:  $1 \times 10^6$  293T (Transfection) cells were surface-stained with ABflo® 594 Rabbit IgG isotype control (A23821, 5  $\mu$ l/Test, left) or ABflo® 594 Rabbit anti-Mouse CD252 (OX40 Ligand) mAb (A25747, 5  $\mu$ l/Test, right).



Confocal imaging of 293T cells transfected with CD252 (OX40 Ligand) using ABflo® 594 Rabbit anti-Mouse CD252 (OX40 Ligand) mAb (A25747, dilution 1:100) (Red). DAPI was used for nuclear staining (Blue). Objective: 100x.