

MEK6 Rabbit pAb

Catalog No.: A2575 **2 Publications**

Basic Information

Observed MW

37kDa

Calculated MW

37kDa

Category

Primary antibody

Applications

WB,IF/ICC,ELISA

Cross-Reactivity

Human, Mouse, Rat

Background

This gene encodes a member of the dual specificity protein kinase family, which functions as a mitogen-activated protein (MAP) kinase kinase. MAP kinases, also known as extracellular signal-regulated kinases (ERKs), act as an integration point for multiple biochemical signals. This protein phosphorylates and activates p38 MAP kinase in response to inflammatory cytokines or environmental stress. As an essential component of p38 MAP kinase mediated signal transduction pathway, this gene is involved in many cellular processes such as stress induced cell cycle arrest, transcription activation and apoptosis.

Recommended Dilutions

WB 1:500 - 1:2000

IF/ICC 1:50 - 1:200

ELISA Recommended starting concentration is 1 µg/mL. Please optimize the concentration based on your specific assay requirements.

Immunogen Information

Gene ID

5608

Swiss Prot

P52564

Immunogen

Recombinant fusion protein containing a sequence corresponding to amino acids 1-334 of human MEK6 (NP_002749.2).

Synonyms

MEK6; MKK6; MAPKK6; PRKMK6; SAPKK3; SAPKK-3

Contact

☎ | 400-999-6126

✉ | cn.market@abclonal.com.cn

🌐 | www.abclonal.com.cn

Product Information

Source

Rabbit

Isotype

IgG

Purification

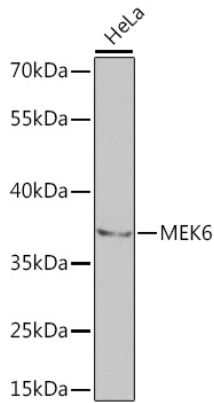
Affinity purification

Storage

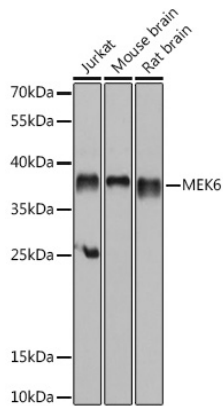
Store at -20°C. Avoid freeze / thaw cycles.

Buffer: PBS with 0.02% sodium azide,50% glycerol,pH7.3.

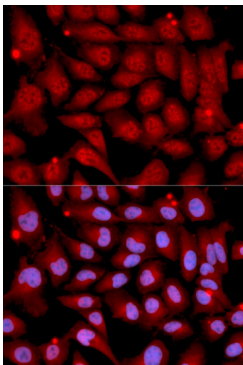
Validation Data



Western blot analysis of lysates from HeLa cells, using MEK6 Rabbit pAb (A2575) at 1:1000 dilution.
Secondary antibody: HRP-conjugated Goat anti-Rabbit IgG (H+L) (AS014) at 1:10000 dilution.
Lysates/proteins: 25µg per lane.
Blocking buffer: 3% nonfat dry milk in TBST.



Western blot analysis of various lysates using MEK6 Rabbit pAb (A2575) at 1:1000 dilution.
Secondary antibody: HRP-conjugated Goat anti-Rabbit IgG (H+L) (AS014) at 1:10000 dilution.
Lysates/proteins: 25µg per lane.
Blocking buffer: 3% nonfat dry milk in TBST.
Detection: ECL Basic Kit (RM00020).
Exposure time: 10s.



Immunofluorescence analysis of U2OS cells using MEK6 Rabbit pAb (A2575). Secondary antibody: Cy3-conjugated Goat anti-Rabbit IgG (H+L) (AS007) at 1:500 dilution. Blue: DAPI for nuclear staining.